

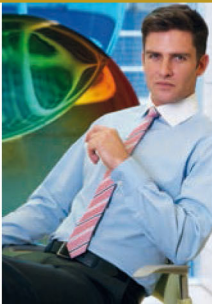


reuniform



CONCEPT

ET SHIRT & BLOUSE COLLECTIONS
2016



CONCEPT COLLECTION

10 piece collection in 3 colours

WOMEN'S

HEBE Jacket	10 - 11
SIGMA Skirt	10 - 11
OMEGA Waistcoat	11
AURA Trouser	09

WOMEN'S COLLECTION SUMMARY

Women's Jackets	12
Women's Waistcoat & Skirt	12 - 13
Women's Trouser & Trouser Profile	13

MEN'S

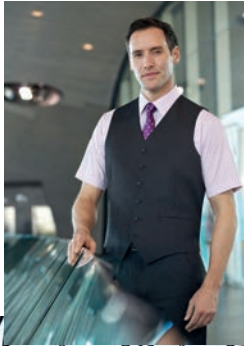
ZEUS Jacket	04 - 05
APOLLO Trouser	04 - 05 - 08
ATLAS Trouser	08
ALPHA Jacket	06 - 07
DELTA Trouser	06 - 07
GAMMA Waistcoat	04

MEN'S COLLECTION SUMMARY

Men's Jackets, Trousers & Waistcoat	14 - 15 - 16
-------------------------------------	--------------

COLOUR CHOICE & AFTERCARE	17
---------------------------	----





CONCEPT COLLECTION



- 65% Polyester, 35% Viscose
- 390gm fabric with Stain Defence Treatment
- Machine washable tailoring
- Ideal for FM, security, transport, hospitality, health sector

ZEUS Jacket

(Charcoal)

Tailored fit, single breasted,
2 button jacket,
2 slant pockets,
side vents,
3 inside pockets.

Mantova Shirt

(Black/White Stripe)



Gamma Waistcoat

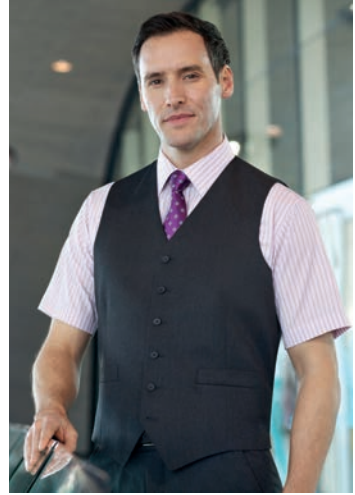
(Charcoal)

6 button front,
2 welt pockets,
cloth backed,
longer back
with adjuster

Rocella Shirt

(Pink/Grey Stripe)

Classic fit,
short sleeve,
chest pocket.



Apollo Trousers

(Black)

Tailored fit, flat front,
2 side pockets,
1 rear pocket.

Rufina Shirt

(White/Grey Stripe)

Classic fit, long sleeve,
single cuff,
chest pocket.

TAILORED FIT SUITING



TAILORED
FIT



CLASSIC FIT

Rufina Shirt
(Blue/White Stripe)
Classic fit, long sleeve,
single cuff
chest pocket.



Delta Trousers
(Navy)
Classic fit, single
pleat trousers,
2 side pockets,
1 rear pocket.

ALPHA Jacket
(Navy)

Classic fit, single breasted,
3 button jacket,
2 straight pockets,
centre vent,
3 inside pockets.



NOW AVAILABLE
UP TO SIZE 60 REGULAR

Delta Trousers

(Navy)
Classic fit, single
pleat trousers,
2 side pockets,
1 rear pocket.



Atlas Trousers

(Navy)
Classic fit, single
pleat, with waistease
function,
2 side pockets,
1 rear pocket



Apollo Trousers

(Black)
Tailored fit, flat front,
2 side pockets,
1 rear pocket.





Aura Trouser

(Black)

Straight leg trouser,
slim waistband,
2 side pockets,
mock rear pockets,
belt loops.

Perano Blouse

(Pink/Grey Stripe)

Semi fitted,
long sleeve,
single cuff.

CLASSIC FIT



Hebe Jacket
(Black)

Sigma Skirt
(Black)
Straight skirt,
centre vent.

Perano Blouse
(White/Grey Stripe)
Semi fitted,
Long sleeve,
single cuff.

Omega Waistcoat

(Black)

6 button front, 2 welt pockets,
cloth backed, longer back with adjuster



Sigma Skirt

(Black)

Straight skirt,
centre vent, fully lined.

HEBE Jacket

(Charcoal)

Classic fit, single breasted,
2 button jacket,
2 slanted flap pockets,
notch lapel,
1 inside pocket,
centre vent.



**SELECTED STYLES
NOW AVAILABLE FROM SIZE 4**

WOMEN'S
CONCEPT COLLECTION

65% Polyester / 35% Viscose
390gm fabric with Stain Defence Treatment, machine washable

**CLASSIC
FIT
JACKET**

**NOW
AVAILABLE
FROM
SIZE 4**



HEBE Jacket (Charcoal)
Classic fit, single breasted, 2 button
jacket, notch lapel, 2 slanted flap
pockets, 1 inside pocket, centre vent.

Sizes: 8 - 16 petite
4 - 24 regular
10 - 18 long

Codes & Colours:
2254A Navy
2254C Charcoal
2254D Black

OMEGA Waistcoat (Navy)
6 button front, 2 welt pockets,
cloth backed, longer back with adjuster.

Sizes: 6 - 24 regular

Codes & Colours:
2233A Navy
2233C Charcoal
2233D Black



STRAIGHT
LEG
PROFILE

NOW
AVAILABLE
FROM SIZE 4



AURA Trouser (Black)

Straight leg trouser; slim waistband, 2 side pockets, mock rear pockets, belt loops.

Sizes: 4 - 24 waist in leg lengths 5-27", R-29", L-31", XL-33" & 36" unfinished

Codes & Colours:

- 2259A Navy
- 2259C Charcoal
- 2259D Black

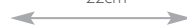
Half hem width at size 12 = 22cm

AURA Trouser

(Black)
Straight leg profile.



*22cm



* Half hem measure at size 12

SIGMA Skirt (Black)

Straight skirt, centre vent, fully lined.

Sizes: 4 - 24 regular - 22"
8 - 18 long - 25"

Codes & Colours:

- 2221A Navy
- 2221C Charcoal
- 2221D Black

MEN'S

CONCEPT COLLECTION

65% Polyester / 35% Viscose

390gm fabric with Stain Defence Treatment, machine washable

CLASSIC FIT JACKET



CLASSIC FIT TROUSER



ALPHA Jacket (Navy)
Classic fit, single breasted,
3 button jacket, 2 straight pockets,
centre vent, 3 inside pockets.

Sizes: 38" - 44" short
36" - 60" regular
40" - 48" long

Codes & Colours:
5981A Navy
5981C Charcoal
5981D Black

DELTA Trousers (Charcoal)
Classic fit, single pleat,
2 side pockets,
1 rear pocket.

Sizes: 28" - 54" waist in leg lengths
S-29.5", R-31.5", L-33"
& 36" unfinished

Codes & Colours:
8515A Navy
8515C Charcoal
8515D Black

Half hem width at waist size 34" = 22cm

**NEW
CLASSIC
FIT**
TROUSER
with waistease
function



Exterior



Interior

NEW TROUSER WITH WAISTEASE FUNCTION

ATLAS Trousers (Navy)
Classic fit, single pleat, with waistease
function, 2 side pockets, 1 rear pocket

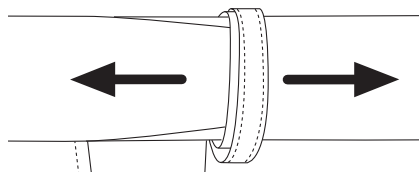
Sizes: 28" - 54" waist in leg lengths
S-29.5", R-31.5", L-33"
& 36" unfinished

Codes & Colours:
8732A Navy
8732C Charcoal
8732D Black

Half hem width at waist size 34" = 22cm

We are delighted to introduce our ATLAS trouser!

The ATLAS has the same cut and fit as our best-selling Delta trouser; but also benefits from a stretch waistease function. This provides extra space in the waist area, bringing such benefits as freedom of movement, support and comfort - a definite plus for wearers in the transport, security and FM sectors.



MEN'S

CONCEPT COLLECTION

65% Polyester / 35% Viscose

390gm fabric with Stain Defence Treatment, machine washable

**TAILORED
FIT
JACKET**



**TAILORED
FIT
TROUSER**



ZEUS Jacket (Charcoal)

Tailored fit, single breasted
2 button jacket, 2 slant pockets,
side vents, 3 inside pockets.

Sizes: 36" - 48" short
36" - 50" regular
38" - 48" long

Codes & Colours:

3124A Navy
3124C Charcoal
3124D Black

APOLLO Trousers (Charcoal)

Tailored fit, flat front,
2 side pockets, 1 rear pocket.

Sizes: 28" - 50" waist in leg lengths
S-29.5", R-31.5", L-33"
& 36" unfinished

Codes & Colours:

8627A Navy
8627C Charcoal
8627D Black

GAMMA Waistcoat (Black)

6 button front, 2 welt pockets,
cloth backed, longer back with adjuster.

Sizes: 36" - 56" regular

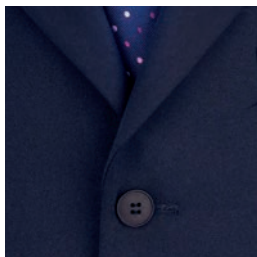
Codes & Colours:

1094A Navy
1094C Charcoal
1094D Black

Half hem width at waist size 34" = 21cm

FABRIC COLOUR CHOICE

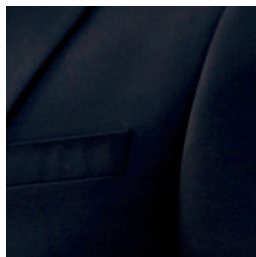
Our **CONCEPT** collection is available in **3 fabric colour choices**.



A. Navy



C. Charcoal



D. Black



Interior

WASHCARE INSTRUCTIONS

WASHING

For the best results ensure that the suit is washed separately & machine wash as wool. Garments will need to be removed immediately from the machine when the cycle has ended.

DRYING

Place the jacket on the hanger, gently shake and re-shape by straightening seams. Fold the trousers to the front creases and hang over the bar on garment hanger. Allow both garments to dry naturally & keep away from direct heat. Do not tumble dry.

FINISHING

If required, press the garments using a cool iron over a damp cloth.

Alternatively, garments from the Concept Collection can be dry cleaned.



MACHINE
WASHABLE

30°

SUITABLE
FOR DRY
CLEANING



SHIRT & BLOUSE COLLECTION

This 20 piece collection offers



WOMEN'S

CREPE DE CHINE

FELINA Short sleeve blouse	20 - 21
RIOLA Long sleeve blouse	20 - 21

STRETCH COTTON BLEND - EASY IRON

TREVI Semi fitted, Single cuff	22 - 23
SOAVE Semi fitted, Short sleeve	22 - 23
FRANCA Semi fitted, Single cuff	26 - 27

COTTON RICH - EASY IRON

PALENA Semi fitted, Single cuff	30 - 31
PADULI Semi fitted, Short sleeve	34 - 35

PERANO Semi fitted, Single cuff	36 - 37
PESCARA Semi fitted, Short sleeve	38 - 39

CAMPANIA Semi fitted, Single cuff	40 - 41
LIGURIA Semi fitted, Short sleeve	42 - 43

MEN'S

STRETCH COTTON BLEND - EASY IRON

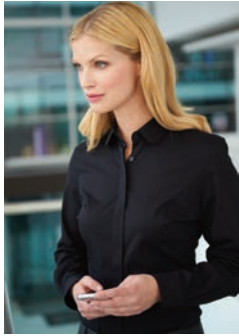
PISA Slim fit, Single cuff	24 - 25
LUCCA Slim fit, Single cuff	28 - 29

COTTON RICH - EASY IRON

RAPINO Classic fit, Single cuff	30
ALBA Slim fit, Single cuff	32 - 33
ROSELLO Classic fit, Short sleeve	34 - 35

RUFINA Classic fit, Single cuff	36 - 37
ROCCELLA Classic fit, Short sleeve	38 - 39

MANTOVA Classic fit, Single cuff	40 - 41
SAVONA Classic fit, Short sleeve	42 - 43



SHIRT & BLOUSE COLLECTION

CREPE DE CHINE - STRETCH COTTON BLEND - COTTON RICH



- Co-ordinating men's and women's business shirts and blouses
- Large choice of fabrics, fits & styles
- Ideal for all corporate arenas

NEW
CREPE
DE CHINE
AVAILABLE TO
SIZE 30

A. White

CREPE DE CHINE



94% Polyester / 6% Elastane CREPE DE CHINE - SHORT & LONG SLEEVE

WOMEN'S **FELINA** Short sleeve

WOMEN'S **RIOLA** Long sleeve

- Short & long sleeve ladies' blouse, round neck, front pleat detail, bust darts
- Single gold button cuff (Riola)
- Rear gold zip detail
- Easy care, machine washable at 30°



B. Cream

FELINA Blouse
(Short sleeve)

Codes & Colours:
2265A White
2265B Cream

Sizes: 6 - 30 regular



FELINA Blouse
(Short sleeve)

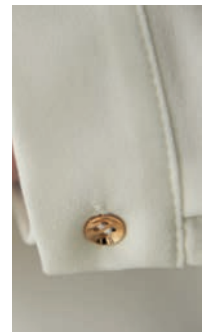
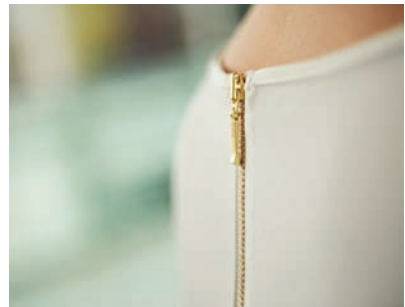
RIOLA Blouse
(Long sleeve)

Codes & Colours:
2264A White
2264B Cream

Sizes: 6 - 30 regular



RIOLA Blouse
(Long sleeve)



Back collar zip and button cuff detail

STRETCH COTTON BLEND



57% Polyester / 39% Cotton / 4% Elastane - EASY IRON

WOMEN'S **TREVI** Semi fitted, Long sleeve, Single cuff

WOMEN'S **SOAVE** Semi fitted, Short sleeve

- Fly front
- Rounded collar
- Single button cuff (Trevi)



NEW TREVI & SOAVE SEMI FITTED



TREVI Blouse
(Semi fitted, Single cuff)



SOAVE Blouse
(Semi fitted, Short sleeve)



A. White



B. Sky Blue



D. Black

TREVI Blouse
(Semi fitted, Single cuff)

Codes & Colours:
2268A White
2268B Sky Blue
2268D Black

Sizes: 6 - 24 regular

SOAVE Blouse
(Semi fitted, Short sleeve)

Codes & Colours:
2269A White
2269B Sky Blue
2269D Black

Sizes: 6 - 24 regular



TREVI & SOAVE blouses match men's PISA shirt.
See pages 24 and 25 for more information.

BROOK TAVERNER
corporate tailoring

NEW PISA SLIM FIT SHIRT



STRETCH COTTON BLEND



57% Polyester / 39% Cotton / 4% Elastane - EASY IRON - LONG SLEEVE

MEN'S PISA Slim fit, Long sleeve, Single cuff

- Single 2 button cuff
- Twin rear darts for defined silhouette



A. White



B. Sky Blue



D. Black

PISA Shirt
(Slim fit, Single cuff)

Codes & Colours:
7721A White
7721B Sky Blue
7721D Black

Sizes: 14.5" - 18"



PISA Shirt
(Slim fit, Single cuff)

PISA shirt matches women's TREVI & SOAVE blouses.
See pages 22 and 23 for more information.

STRETCH COTTON BLEND



57% Polyester / 39% Cotton / 4% Elastane - EASY IRON - LONG SLEEVE

WOMEN'S **FRANCA** Semi fitted, Single cuff

- Fly front
- Contrast White rounded collar and contrast White single button cuff



FRANCA Blouse
(Semi fitted, Single cuff)

Codes & Colours:

- 2251A White with front panel stripe
- 2251B Sky Blue
- 2251C Blue Stripe
- 2251D Lilac Stripe
- 2251E Red Stripe

Sizes: 6 - 24 regular

FRANCA blouse matches men's LUCCA shirt.
See pages 28 and 29 for more information.



A. White with front panel stripe



FRANCA Blouse
(Semi fitted, Single cuff)



B. Sky Blue



C. Blue Stripe



D. Lilac Stripe



E. Red Stripe

STRETCH COTTON BLEND



57% Polyester / 39% Cotton / 4% Elastane - EASY IRON - LONG SLEEVE

MEN'S LUCCA Slim fit, Single cuff

- Contrast white collar with single 2 button cuff
- Twin rear darts for defined silhouette

LUCCA Shirt
(Slim fit, Single cuff)

Codes & Colours:

- 7658B Sky Blue
- 7658C Blue stripe
- 7658D Lilac stripe
- 7658E Red stripe

Sizes: 14.5" - 18"



B. Sky Blue

C. Blue Stripe

D. Lilac Stripe

E. Red Stripe

LUCCA shirt matches women's FRANCA blouse.
See pages 26 and 27 for more information.

SLIM FIT

SINGLE CUFF



LUCCA Shirt
(Slim fit, Single cuff)

COTTON RICH



55% Cotton / 45% Polyester - EASY IRON - LONG SLEEVE

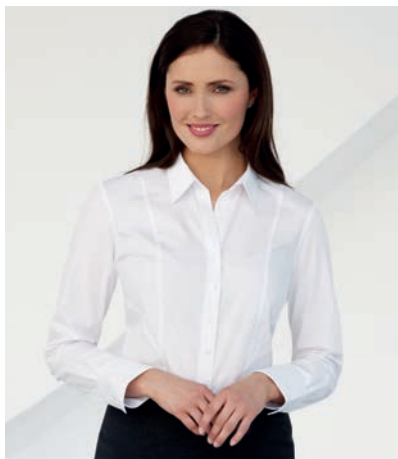
MEN'S **RAPINO** Classic fit, Single cuff

WOMEN'S **PALENA** Semi fitted, Single cuff

- Chest pocket (Rapino)
- Single 2 button cuff (Palena)



CLASSIC FIT SINGLE CUFF



SEMI FITTED SINGLE CUFF

RAPINO Shirt
(Classic fit, Single cuff)

Codes & Colours:

7539A White
7539B Pink
7539D Black
7539E Blue

Sizes: 14.5" - 20"



RAPINO Shirt
(Classic fit, Single cuff)

PALENA Blouse
(Semi fitted, Single cuff)

Codes & Colours:
2214A White
2214E Blue

Sizes: 4 - 30 regular



PALENA Blouse
(Semi fitted, Single cuff)

Codes & Colours:
2214B Pink
2214D Black

Sizes: 6 - 24 regular

**EXTENDED SIZE RANGE
NOW AVAILABLE**



RAPINO shirt & PALENA blouse match
men's ALBA & ROSELLO shirts and women's PADULI blouse.
See pages 32, 33, 34 and 35 for more information.

COTTON RICH



55% Cotton / 45% Polyester - EASY IRON - LONG SLEEVE

MEN'S ALBA Slim fit, Single cuff

- Twin rear darts for a defined silhouette
- Semi cutaway collar

ALBA Shirt
(Slim fit, Single cuff)

Codes & Colours:
7640A White
7640D Black
7640E Blue

Sizes: 14" - 18"



ALBA shirt matches men's RAPINO & ROSELLO shirts and women's PALENA & PADULI blouses. See pages 30, 31, 34, and 35 for more information.

SLIM FIT



ALBA Shirt
(Slim fit, Single cuff)



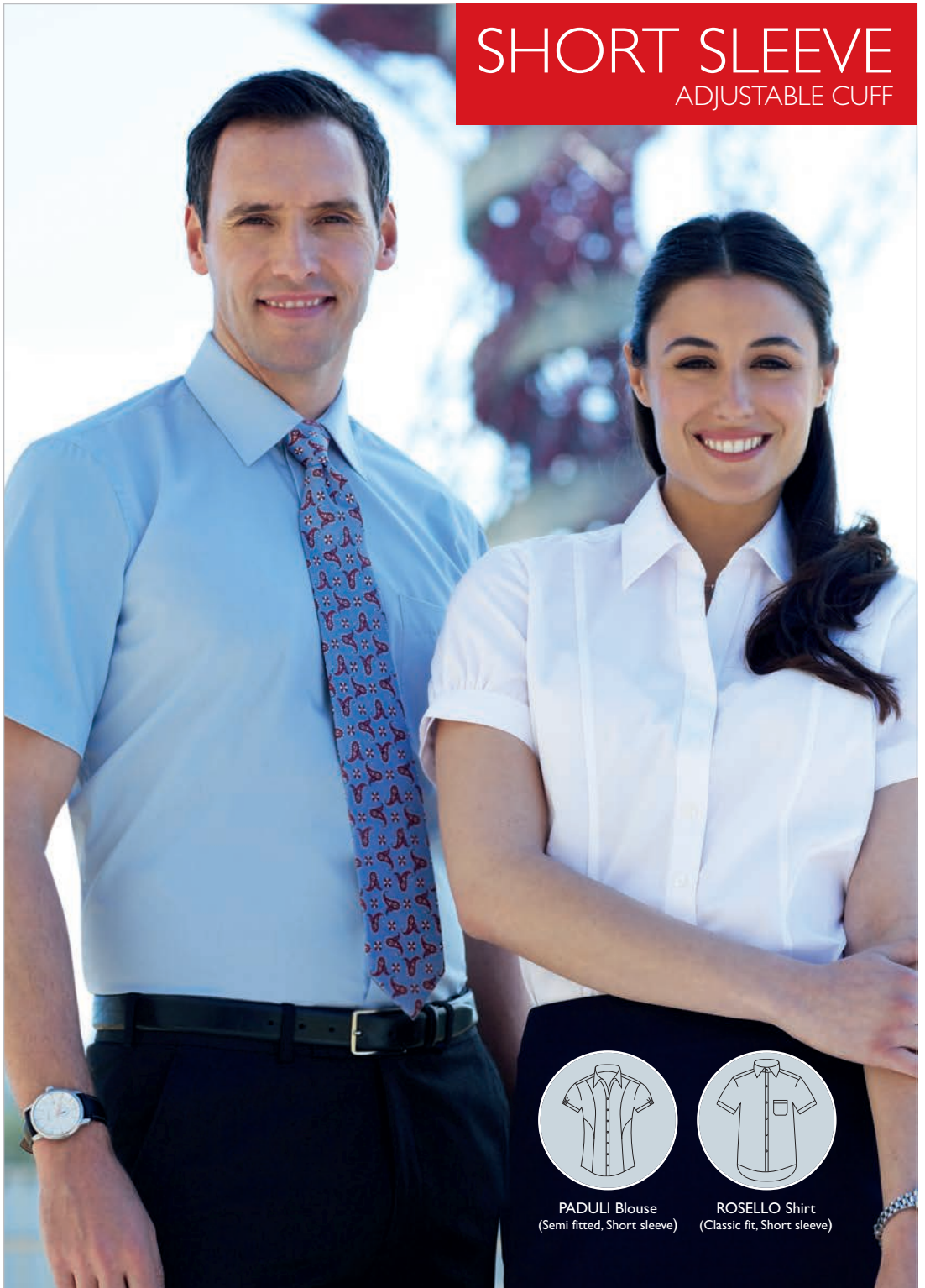
A. White

E. Blue

D. Black

SHORT SLEEVE

ADJUSTABLE CUFF



PADULI Blouse
(Semi fitted, Short sleeve)



ROSELLO Shirt
(Classic fit, Short sleeve)

COTTON RICH



55% Cotton / 45% Polyester - EASY IRON - SHORT SLEEVE

WOMEN'S **PADULI** Semi fitted, Short sleeve

MEN'S **ROSELLO** Classic fit, Short sleeve

- Chest pocket (Rosello)
- Short sleeve with adjustable cuff (Paduli)

**EXTENDED SIZE RANGE
NOW AVAILABLE**

E. Blue



PADULI Blouse
(Semi fitted, Short sleeve)

Codes & Colours:
2216A White
2216E Blue

Sizes: 4 - 30 regular

Codes & Colours:
2216B Pink
2216D Black

Sizes: 6 - 24 regular

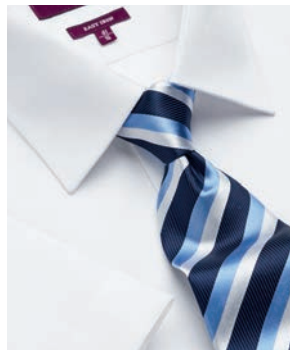
ROSELLO Shirt
(Classic fit, Short sleeve)

Codes & Colours:
7541A White
7541B Pink
7541D Black
7541E Blue

Sizes: 14.5" - 20"



B. Pink PADULI adjustable cuff detail



A. White



D. Black

PADULI blouse & ROSELLO shirt match men's ALBA & RAPINO shirts & women's PALENA blouse.

See pages 30, 31, 32 and 33 for more information.

COTTON RICH

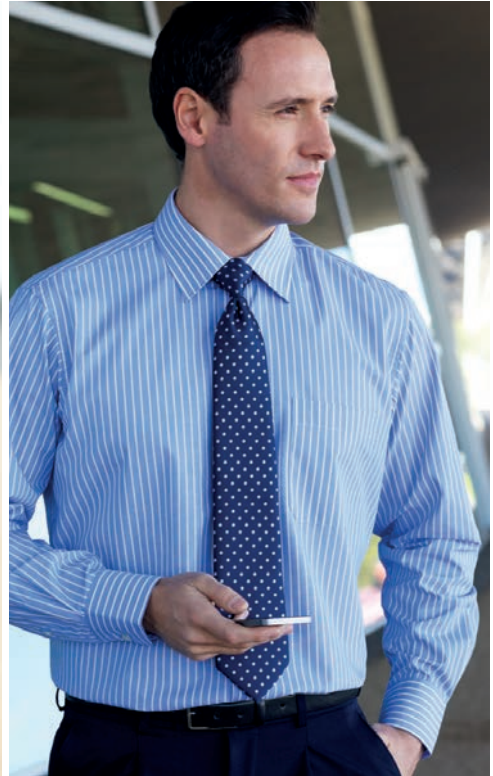


60% Cotton / 40% Polyester - EASY IRON - LONG SLEEVE

WOMEN'S **PERANO** Semi fitted, Single cuff

MEN'S **RUFINA** Classic fit, Single cuff

- Chest pocket (Rufina)
- Single 2 button cuff (Perano)



A. White/Grey Stripe



B. Pink/Grey Stripe



C. Blue/White Stripe

PERANO Blouse
(Semi fitted, Single cuff)

- Codes & Colours:**
2215A White/Grey Stripe
2215B Pink/Grey Stripe
2215C Blue/White Stripe

Sizes: 6 - 24 regular

RUFINA Shirt
(Classic fit, Single cuff)

- Codes & Colours:**
7540A White/Grey Stripe
7540B Pink/Grey Stripe
7540C Blue/White Stripe

Sizes: 14.5''- 20''



PERANO Blouse
(Semi fitted, Long sleeve)



RUFINA Shirt
(Classic fit, Long sleeve)



PERANO blouse & RUFINA shirt match PESCARA blouse & ROCCELLA shirt.
See pages 38 and 39 for more information.

COTTON RICH



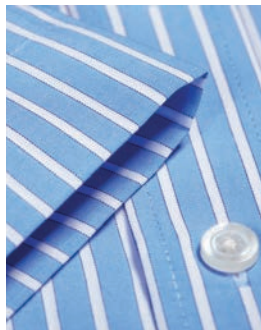
60% Cotton / 40% Polyester - EASY IRON - SHORT SLEEVE

WOMEN'S **PESCARA** Semi fitted, Short sleeve

MEN'S **ROCCELLA** Classic fit, Short sleeve

- Chest pocket (Roccella)
- Short sleeve with adjustable cuff (Pescara)

A. White/Grey Stripe



PESCARA blouse & ROCCELLA shirt match PERANO blouse & RUFINA shirt.
See pages 36 and 37 for more information.

C. Blue/White Stripe

SHORT SLEEVE

BROOK TAVERNER
corporate tailoring



B. Pink/Grey Stripe



PESCARA Blouse
(Semi fitted, Short sleeve)



ROCELLA Shirt
(Classic fit, Short sleeve)

PESCARA Blouse
(Semi fitted, Short sleeve)

Codes & Colours:

2217A White/Grey Stripe
2217B Pink/Grey Stripe
2217C Blue/White Stripe

Sizes: 6 - 24 regular

ROCELLA Shirt
(Classic fit, Short sleeve)

Codes & Colours:

7542A White/Grey Stripe
7542B Pink/Grey Stripe
7542C Blue/White Stripe

Sizes: 14.5" - 20"

COTTON RICH



60% Cotton / 40% Polyester - EASY IRON - LONG SLEEVE

MEN'S **MANTOVA** Classic fit, Single cuff

WOMEN'S **CAMPANIA** Semi fitted, Single cuff

- Chest pocket (Mantova)
- Contrast inner collar and cuff (colours B, C & D only)
- Double button fastening (Campania)

MANTOVA shirt
& CAMPANIA blouse
match SAVONA shirt
& LIGURIA blouse.
See pages 42 and 43 for
more information.

MANTOVA Shirt
(Classic fit, Single cuff)

Codes & Colours:

- 7594A White Waffle Weave
- 7594B Sky Blue/Magenta Stripe
- 7594C Black/White Stripe

Sizes: 14.5" - 20"



MANTOVA Shirt
(Classic fit, Single cuff)



A. White Waffle Weave



B. Sky Blue/Magenta Stripe

CAMPANIA Blouse
(Semi fitted, Single cuff)

Codes & Colours:

- 2239A White Waffle Weave
- 2239B Sky Blue/Magenta Stripe
- 2239C Black/White Stripe
- 2239D Candy Stripe

Sizes: 6 - 24 regular



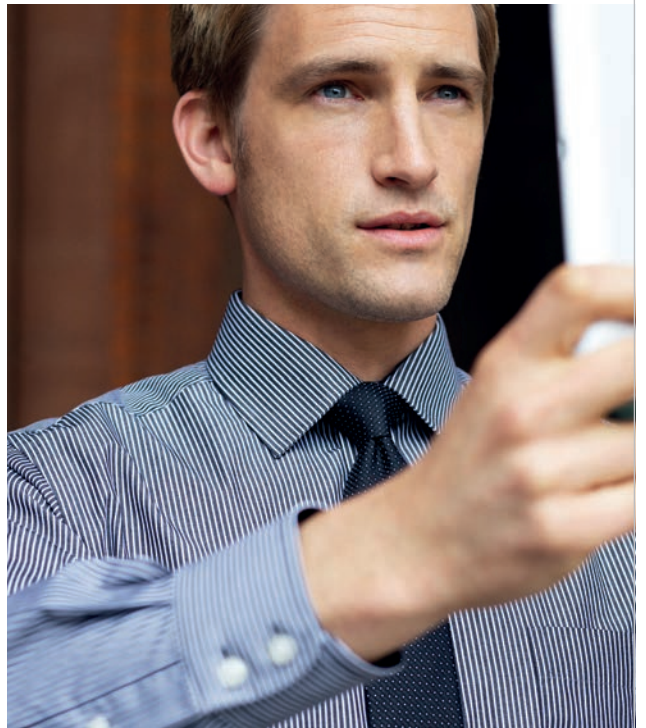
CAMPANIA Blouse
(Semi fitted, Single cuff)



C. Black/White Stripe



D. Candy Stripe
(Campania & Liguria only)



COTTON RICH



60% Cotton / 40% Polyester - EASY IRON - SHORT SLEEVE

MEN'S **SAVONA** Classic fit, Short sleeve

WOMEN'S **LIGURIA** Semi fitted, Short sleeve

- Chest pocket (Savona)
- Contrast inner collar and cuff (colours B, C & D only)
- Short sleeve with 2 button cuff detail (Liguria)

CONTRAST INTERNAL COLLAR & CUFF



SAVONA Shirt
(Classic fit, Short sleeve)

Codes & Colours:

- 7595A White Waffle Weave
- 7595B Sky Blue/Magenta Stripe
- 7595C Black/White Stripe

Sizes: 14.5" - 20"

LIGURIA Blouse
(Semi fitted, Short sleeve)

Codes & Colours:

- 2240A White Waffle Weave
- 2240B Sky Blue/Magenta Stripe
- 2240C Black/White Stripe
- 2240D Candy Stripe

Sizes: 6 - 24 regular





A. White Waffle Weave



B. Sky Blue/Magenta Stripe



C. Black/White Stripe



D. Candy Stripe
(Liguria & Campania only)



LIGURIA Blouse
(Semi fitted, Short sleeve)



SAVONA Shirt
(Classic fit, Short sleeve)

SAVONA shirt & LIGURIA blouse match
MANTOVA shirt & CAMPANIA blouse.
See pages 40 and 41 for more information.



BROOK TAVERNER
corporate tailoring

www.brooktaverner.com