



reunifform



SHIRT & BLOUSE COLLECTION

PREMIUM COTTON - CREPE DE CHINE - STRETCH COTTON BLEND - COTTON RICH



- Co-ordinating men's and women's business shirts and blouses
- Large choice of fabrics, fits & styles
- Ideal for all corporate arenas

PREMIUM COTTON



100% SUPERFINE COTTON - EASY IRON

MEN'S **ANDORA** Classic fit, Double cuff **ALTARE** Classic fit, Single cuff **PRATO** Slim fit, Double cuff
WOMEN'S **VILLETA** Semi fitted, Double cuff **OZZERO** Semi fitted, Short sleeve

- Double cuff with complementary silk cuff knots (except Altare & Ozzero)
- Taped seams
- Removable metal collar stiffeners (men's shirts)
- Men's extra long sleeve available



A. White Herringbone

E. Pink/Grey Stripe

VILLETA Blouse (shown)
(Semi fitted, Double cuff)

Codes & Colours:

2247A White Herringbone
2247B Blue Herringbone
2247C Charcoal/White Stripe
2247D Raspberry Stripe
2247E Pink/Grey Stripe

Sizes: 6 - 24 regular

OZZERO Blouse
(Semi fitted, Short sleeve)

Codes & Colours:

2249A White Herringbone
2249B Blue Herringbone

Sizes: 6 - 24 regular

PRATO shirt
(Slim fit, Double cuff)

Codes & Colours:

7720A White Herringbone
7720B Blue Herringbone

Sizes: 14.5" - 18"

ANDORA Shirt (shown)
(Classic fit, Double cuff)

Codes & Colours:

7656A White Herringbone
7656AL White Herringbone
Extra long sleeve 36.5"
7656B Blue Herringbone
7656BL Blue Herringbone
Extra long sleeve 36.5"
7656C Charcoal/White Stripe
7656D Raspberry Stripe
7656E Pink/Grey Stripe

Sizes: 14.5" - 20"

* Extra long sleeve 36.5" at size 15.5"

ALTARE Shirt
(Classic fit, Single cuff)

Codes & Colours:

7655A White Herringbone
7655AL White Herringbone
Extra long sleeve 36.5"
7655B Blue Herringbone
7655BL Blue Herringbone
Extra long sleeve 36.5"

Sizes: 14.5" - 20"

* Extra long sleeve available from size 15"



B. Blue Herringbone

D. Raspberry Stripe

C. Charcoal/White Stripe



PRATO Shirt
(Slim fit, Double cuff)



ANDORA Shirt
(Classic fit, Double cuff)



ALTARE Shirt
(Classic fit, Single cuff)



VILLETA Blouse
(Semi fitted, Double cuff)



OZZERO Blouse
(Semi fitted, Short sleeve)

PREMIUM COTTON



100% SUPERFINE COTTON - HERRINGBONE WEAVE - EASY IRON

MEN'S **ANDORA** Classic fit, Double cuff **ALTARE** Classic fit, Single cuff **PRATO** Slim fit, Double cuff

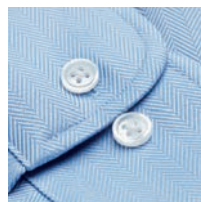
- Double cuff with complementary silk cuff knots (except Altare)
- Taped seams
- Removable metal collar stiffeners
- Men's extra long sleeve available



ANDORA Shirt
(Classic fit, Double cuff)



ALTARE Shirt
(Classic fit, Single cuff)



PRATO Shirt
(Semi fitted, Double cuff)

ANDORA Shirt
(Classic fit, Double cuff)

Codes & Colours:

- 7656A White Herringbone
- 7656AL White Herringbone
Extra long sleeve 36.5"
- 7656B Blue Herringbone
- 7656BL Blue Herringbone
Extra long sleeve 36.5"
- 7656C Charcoal/White Stripe
- 7656D Raspberry Stripe
- 7656E Pink/Grey Stripe

Sizes: 14.5" - 20"
* Extra long sleeve 36.5" at size 15.5"

ANDORA is also available in 3 striped designs.
See pages 38 and 39 for more information.

ALTARE Shirt
(Classic fit, Single cuff)

Codes & Colours:

- 7655A White Herringbone
- 7655AL White Herringbone
Extra long sleeve 36.5"
- 7655B Blue Herringbone
- 7655BL Blue Herringbone
Extra long sleeve 36.5"

Sizes: 14.5" - 20"
* Extra long sleeve 36.5" at size 15.5"

PRATO shirt
(Slim fit, Double cuff)

- Codes & Colours:**
- 7720A White Herringbone
 - 7720B Blue Herringbone

Sizes: 14.5" - 18"

SLIM FIT DOUBLE CUFF



ANDORA Shirt
(Classic fit, Double cuff)



ALTARE Shirt
(Classic fit, Single cuff)



PRATO Shirt
(Slim fit, Double cuff)





SEMI FITTED
DOUBLE CUFF

PREMIUM COTTON



100% SUPERFINE COTTON - HERRINGBONE WEAVE - EASY IRON

WOMEN'S **VILLETA** Semi fitted, Double cuff

WOMEN'S **OZZERO** Semi fitted, Short sleeve

- Double cuff with complementary silk cuff knots (except Ozzero)
- Taped seams



VILLETA Blouse
(Semi fitted, Double cuff)



OZZERO Blouse
(Semi fitted, Short sleeve)

VILLETA Blouse
(Semi fitted, Double cuff)

Codes & Colours:

- 2247A White Herringbone
- 2247B Blue Herringbone
- 2247C Charcoal/White Stripe
- 2247D Raspberry Stripe
- 2247E Pink/Grey Stripe

Sizes: 6 - 24 regular

OZZERO Blouse
(Semi fitted, Short sleeve)

Codes & Colours:

- 2249A White Herringbone
- 2249B Blue Herringbone

Sizes: 6 - 24 regular



VILLETA Blouse
(Semi fitted, Double cuff)



OZZERO Blouse
(Semi fitted, Short sleeve)



PREMIUM COTTON



100% SUPERFINE COTTON - STRIPED DESIGNS - EASY IRON

MEN'S **ANDORA** Classic fit, Double cuff

WOMEN'S **VILLETA** Semi fitted, Double cuff

- Double cuff with complementary silk cuff knots
- Taped seams
- Removable metal collar stiffeners (men's shirts)



ANDORA Shirt
(Classic fit, Double cuff)



VILLETA Blouse
(Semi fitted, Double cuff)



D. Raspberry Stripe

ANDORA Shirt
(Classic fit, Double cuff)

Codes & Colours:

- 7656A White Herringbone
- 7656AL White Herringbone
Extra long sleeve 36.5"
- 7656B Blue Herringbone
- 7656BL Blue Herringbone
Extra long sleeve 36.5"
- 7656C Charcoal/White Stripe
- 7656D Raspberry Stripe
- 7656E Pink/Grey Stripe

- Sizes:** 14.5" - 20"
* Extra long sleeve 36.5" at size 15.5"

VILLETA Blouse
(Semi fitted, Double cuff)

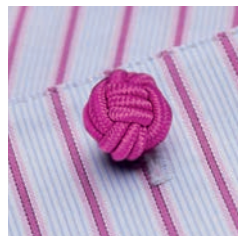
Codes & Colours:

- 2247A White Herringbone
- 2247B Blue Herringbone
- 2247C Charcoal/White Stripe
- 2247D Raspberry Stripe
- 2247E Pink/Grey Stripe

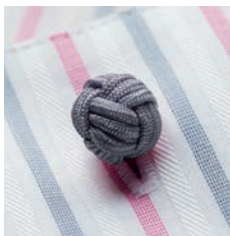
- Sizes:** 6 - 24 regular



C. Charcoal/White Stripe



D. Raspberry Stripe



E. Pink/Grey Stripe

CLASSIC FIT
DOUBLE CUFF



C. Charcoal/White Stripe

D. Raspberry Stripe

E. Pink/Grey Stripe

SEMI
FITTED
3 BUTTON CUFF



PREMIUM COTTON



100% SUPERFINE COTTON - EASY IRON - LONG SLEEVE

WOMEN'S **TREVISO** Semi fitted, Single cuff

- Single 3 button cuff
- Classic button up collar



A. White

B. Blue

TREVISO Blouse
(Semi fitted, Single cuff)

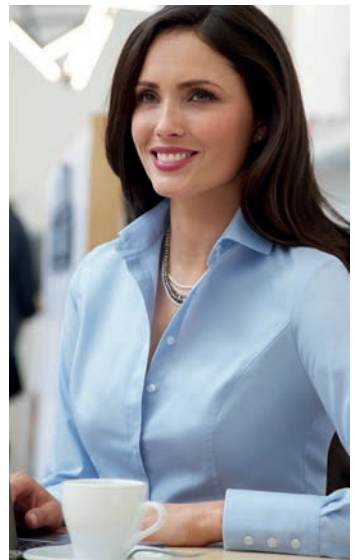
Codes & Colours:
2244A White
2244B Blue

Sizes: 6 - 24 regular



TREVISO Blouse
(Semi fitted, Single cuff)

CHESTER Shirt
(Classic fit, Double cuff)



TREVISO blouse matches CHESTER, CHEADLE & CHELFORD shirts.
See pages 42 and 43 for more information.

PREMIUM COTTON



100% COTTON POPLIN WEAVE - EASY IRON - LONG SLEEVE

MEN'S **CHESTER** Classic fit, Double cuff

MEN'S **CHEADLE** Classic fit, Single cuff

MEN'S **CHELFORD** Slim fit, Double cuff

- Taped seams
- Removable metal collar stiffeners
- Men's extra long sleeve available



CHESTER Shirt
(Classic fit, Double cuff)

Codes & Colours:

7642A White

7642B Blue

Sizes: 14.5" - 20"



CHESTER Shirt
(Classic fit, Double cuff)

CHEADLE Shirt
(Classic fit, Single cuff)

Codes & Colours:

7641A White

7641AL White

7641B Extra long sleeve 36.5"

Blue

Sizes: 14.5" - 20"

* Extra long sleeve 36.5" at size 15.5"



CHEADLE Shirt
(Classic fit, Single cuff)

CLASSIC FIT

All match **TREVISO** blouse.

See pages 40 and 41 for more information.

CHELFORD Shirt
(Slim fit, Double cuff)

Codes & Colours:
7643A White
7643B Blue

Sizes: 14.5" - 18"



CHELFORD Shirt
(Slim fit, Double cuff)

SLIM FIT
DOUBLE CUFF



NEW
CREPE
DE CHINE
AVAILABLE TO
SIZE 30

A. White



CREPE DE CHINE



94% Polyester / 6% Elastane CREPE DE CHINE - SHORT & LONG SLEEVE

WOMEN'S **FELINA** Short sleeve

WOMEN'S **RIOLA** Long sleeve

- Short & long sleeve ladies' blouse, round neck, front pleat detail, bust darts
- Single gold button cuff (Riola)
- Rear gold zip detail
- Easy care, machine washable at 30°



B. Cream

FELINA Blouse
(Short sleeve)

Codes & Colours:
2265A White
2265B Cream

Sizes: 6 - 30 regular



FELINA Blouse
(Short sleeve)

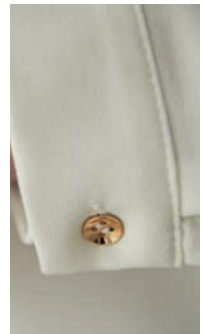
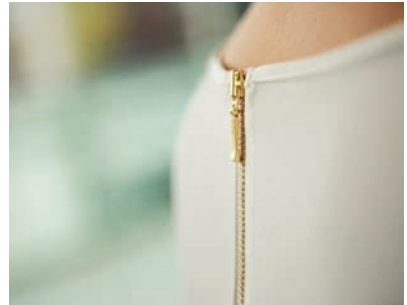
RIOLA Blouse
(Long sleeve)

Codes & Colours:
2264A White
2264B Cream

Sizes: 6 - 30 regular



RIOLA Blouse
(Long sleeve)



Back collar zip and button cuff detail

STRETCH COTTON BLEND

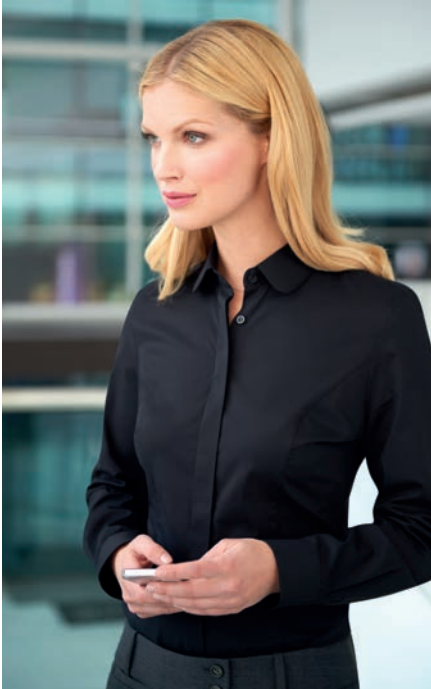


57% Polyester / 39% Cotton / 4% Elastane - EASY IRON

WOMEN'S **TREVI** Semi fitted, Long sleeve, Single cuff

WOMEN'S **SOAVE** Semi fitted, Short sleeve

- Fly front
- Rounded collar
- Single button cuff (Trevi)



NEW TREVI & SOAVE
SEMI FITTED



TREVI Blouse
(Semi fitted, Single cuff)



SOAVE Blouse
(Semi fitted, Short sleeve)



A. White



B. Sky Blue



D. Black

TREVI Blouse
(Semi fitted, Single cuff)

Codes & Colours:
2268A White
2268B Sky Blue
2268D Black

Sizes: 6 - 24 regular

SOAVE Blouse
(Semi fitted, Short sleeve)

Codes & Colours:
2269A White
2269B Sky Blue
2269D Black

Sizes: 6 - 24 regular



TREVI & SOAVE blouses match men's PISA shirt.
See pages 48 and 49 for more information.

BROOK TAVERNER
corporate tailoring

NEW PISA SLIM FIT SHIRT



STRETCH COTTON BLEND



57% Polyester / 39% Cotton / 4% Elastane - EASY IRON - LONG SLEEVE

MEN'S PISA Slim fit, Long sleeve, Single cuff

- Single 2 button cuff
- Twin rear darts for defined silhouette



A. White



B. Blue



D. Black

PISA Shirt
(Slim fit, Single cuff)

Codes & Colours:
7721A White
7721B Sky Blue
7721D Black

Sizes: 14.5" - 18"



PISA Shirt
(Slim fit, Single cuff)

PISA shirt matches women's TREVI & SOAVE blouses.
See pages 46 and 47 for more information.

STRETCH COTTON BLEND



57% Polyester / 39% Cotton / 4% Elastane - EASY IRON - LONG SLEEVE

WOMEN'S **FRANCA** Semi fitted, Single cuff

- Fly front
- Contrast White rounded collar and contrast White single button cuff



SEMI FITTED
CONTRAST SINGLE CUFF

FRANCA Blouse
(Semi fitted, Single cuff)

Codes & Colours:

- 2251A White with front panel stripe
- 2251B Sky Blue
- 2251C Blue Stripe
- 2251D Lilac Stripe
- 2251E Red Stripe

Sizes: 6 - 24 regular

FRANCA blouse matches men's **LUCCA** shirt.
See pages 52 and 53 for more information.



A. White with front panel stripe



FRANCA Blouse
(Semi fitted, Single cuff)



B. Sky Blue



C. Blue Stripe



D. Lilac Stripe



E. Red Stripe

STRETCH COTTON BLEND



57% Polyester / 39% Cotton / 4% Elastane - EASY IRON - LONG SLEEVE

MEN'S **LUCCA** Slim fit, Single cuff

- Contrast white collar with single 2 button cuff
- Twin rear darts for defined silhouette

LUCCA Shirt

(Slim fit, Single cuff)

Codes & Colours:

7658B Sky Blue
7658C Blue stripe
7658D Lilac stripe
7658E Red stripe

Sizes: 14.5" - 18"



B. Sky Blue

C. Blue Stripe

D. Lilac Stripe

E. Red Stripe

LUCCA shirt matches women's FRANCA blouse.
See pages 50 and 51 for more information.

SLIM FIT

SINGLE CUFF



LUCCA Shirt
(Slim fit, Single cuff)

COTTON RICH



55% Cotton / 45% Polyester - EASY IRON - LONG SLEEVE

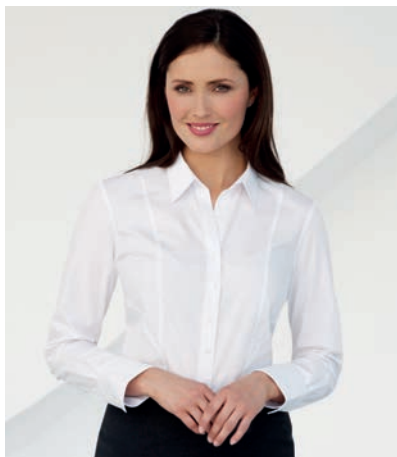
MEN'S **RAPINO** Classic fit, Single cuff

WOMEN'S **PALENA** Semi fitted, Single cuff

- Chest pocket (Rapino)
- Single 2 button cuff (Palena)



CLASSIC FIT SINGLE CUFF



SEMI FITTED SINGLE CUFF

RAPINO Shirt
(Classic fit, Single cuff)

Codes & Colours:

7539A White
7539B Pink
7539D Black
7539E Blue

Sizes: 14.5" - 20"



RAPINO Shirt
(Classic fit, Single cuff)

PALENA Blouse
(Semi fitted, Single cuff)

Codes & Colours:
2214A White
2214E Blue

Sizes: 4 - 30 regular



PALENA Blouse
(Semi fitted, Single cuff)

Codes & Colours:
2214B Pink
2214D Black

Sizes: 6 - 24 regular

**EXTENDED SIZE RANGE
NOW AVAILABLE**



RAPINO shirt & PALENA blouse match
men's ALBA & ROSELLO shirts and women's PADULI blouse.
See pages 56, 57, 58 and 59 for more information.

COTTON RICH



55% Cotton / 45% Polyester - EASY IRON - LONG SLEEVE

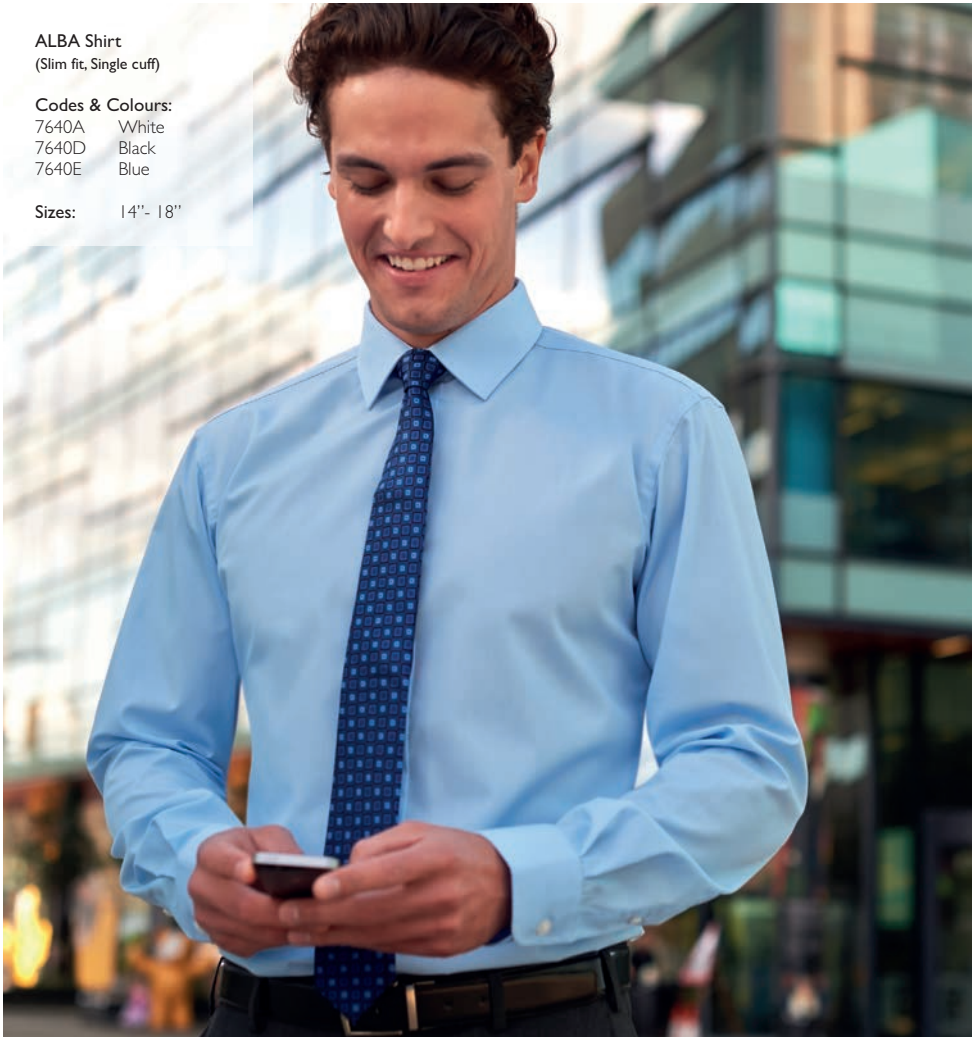
MEN'S ALBA Slim fit, Single cuff

- Twin rear darts for a defined silhouette
- Semi cutaway collar

ALBA Shirt
(Slim fit, Single cuff)

Codes & Colours:
7640A White
7640D Black
7640E Blue

Sizes: 14" - 18"



ALBA shirt matches
men's RAPINO & ROSELLO shirts and women's PALENA & PADULI blouses.
See pages 54, 55, 58 and 59 for more information.

SLIM FIT



ALBA Shirt
(Slim fit, Single cuff)



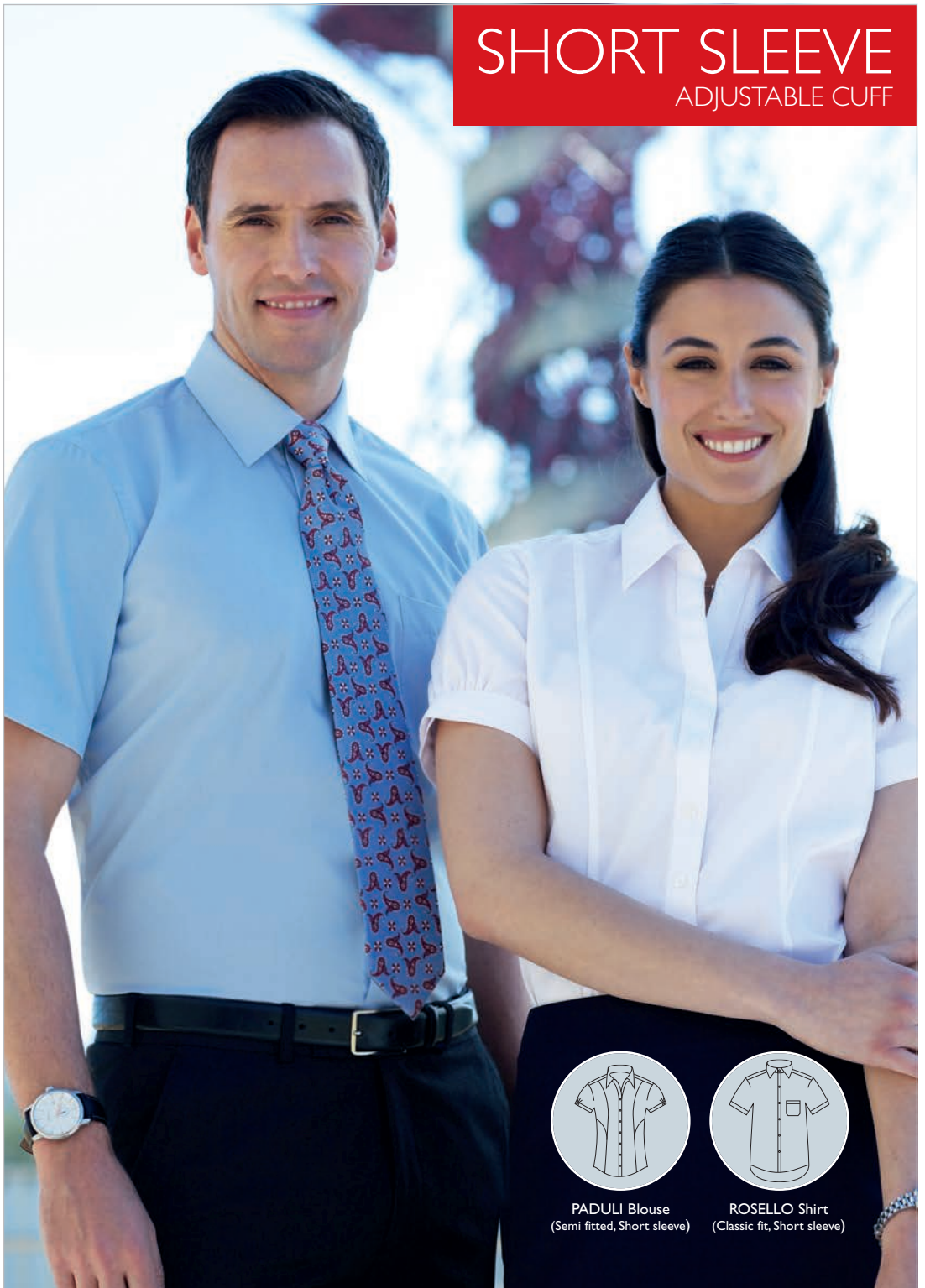
A. White

E. Blue

D. Black

SHORT SLEEVE

ADJUSTABLE CUFF



PADULI Blouse
(Semi fitted, Short sleeve)



ROSELLO Shirt
(Classic fit, Short sleeve)

COTTON RICH



55% Cotton / 45% Polyester - EASY IRON - SHORT SLEEVE

WOMEN'S **PADULI** Semi fitted, Short sleeve

MEN'S **ROSELLO** Classic fit, Short sleeve

- Chest pocket (Rosello)
- Short sleeve with adjustable cuff (Paduli)

EXTENDED SIZE RANGE NOW AVAILABLE

E. Blue



PADULI Blouse
(Semi fitted, Short sleeve)

Codes & Colours:
2216A White
2216E Blue

Sizes: 4 - 30 regular

Codes & Colours:
2216B Pink
2216D Black

Sizes: 6 - 24 regular

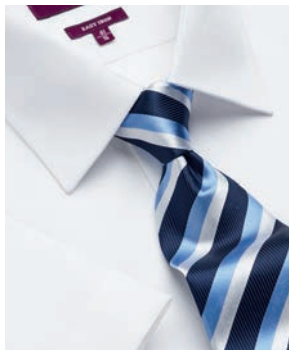
ROSELLO Shirt
(Classic fit, Short sleeve)

Codes & Colours:
7541A White
7541B Pink
7541D Black
7541E Blue

Sizes: 14.5" - 20"



B. Pink PADULI adjustable cuff detail



A. White



D. Black

PADULI blouse & ROSELLO shirt match men's ALBA & RAPINO shirts & women's PALENA blouse.
See pages 54, 55, 56 and 57 for more information.

COTTON RICH



60% Cotton / 40% Polyester - EASY IRON - LONG SLEEVE

WOMEN'S **PERANO** Semi fitted, Single cuff

MEN'S **RUFINA** Classic fit, Single cuff

- Chest pocket (Rufina)
- Single 2 button cuff (Perano)



A. White/Grey Stripe



B. Pink/Grey Stripe



C. Blue/White Stripe

PERANO Blouse
(Semi fitted, Single cuff)

- Codes & Colours:**
2215A White/Grey Stripe
2215B Pink/Grey Stripe
2215C Blue/White Stripe

Sizes: 6 - 24 regular

RUFINA Shirt
(Classic fit, Single cuff)

- Codes & Colours:**
7540A White/Grey Stripe
7540B Pink/Grey Stripe
7540C Blue/White Stripe

Sizes: 14.5"- 20"



PERANO Blouse
(Semi fitted, Long sleeve)



RUFINA Shirt
(Classic fit, Long sleeve)



PERANO blouse & RUFINA shirt match PESCARA blouse & ROCCELLA shirt.
See pages 62 and 63 for more information.

COTTON RICH



60% Cotton / 40% Polyester - EASY IRON - SHORT SLEEVE

WOMEN'S **PESCARA** Semi fitted, Short sleeve

MEN'S **ROCCELLA** Classic fit, Short sleeve

- Chest pocket (Roccella)
- Short sleeve with adjustable cuff (Pescara)

A. White/Grey Stripe



PESCARA blouse & ROCCELLA shirt match PERANO blouse & RUFINA shirt.
See pages 60 and 61 for more information.

C. Blue/White Stripe

SHORT SLEEVE



PESCARA Blouse
(Semi fitted, Short sleeve)



ROCCELLA Shirt
(Classic fit, Short sleeve)

PESCARA Blouse
(Semi fitted, Short sleeve)

Codes & Colours:

2217A White/Grey Stripe
2217B Pink/Grey Stripe
2217C Blue/White Stripe

Sizes: 6 - 24 regular

ROCCELLA Shirt
(Classic fit, Short sleeve)

Codes & Colours:

7542A White/Grey Stripe
7542B Pink/Grey Stripe
7542C Blue/White Stripe

Sizes: 14.5" - 20"

B. Pink/Grey Stripe

COTTON RICH



60% Cotton / 40% Polyester - EASY IRON - LONG SLEEVE

MEN'S **MANTOVA** Classic fit, Single cuff

WOMEN'S **CAMPANIA** Semi fitted, Single cuff

- Chest pocket (Mantova)
- Contrast inner collar and cuff (colours B, C & D only)
- Double button fastening (Campania)

MANTOVA shirt
& CAMPANIA blouse
match SAVONA shirt
& LIGURIA blouse.
See pages 66 and 67 for
more information.

MANTOVA Shirt
(Classic fit, Single cuff)

Codes & Colours:

- 7594A White Waffle Weave
- 7594B Sky Blue/Magenta Stripe
- 7594C Black/White Stripe

Sizes: 14.5" - 20"



MANTOVA Shirt
(Classic fit, Single cuff)



A. White
Waffle Weave



**B. Sky Blue/
Magenta Stripe**

CAMPANIA Blouse
(Semi fitted, Single cuff)

Codes & Colours:

- 2239A White Waffle Weave
- 2239B Sky Blue/Magenta Stripe
- 2239C Black/White Stripe
- 2239D Candy Stripe

Sizes: 6 - 24 regular



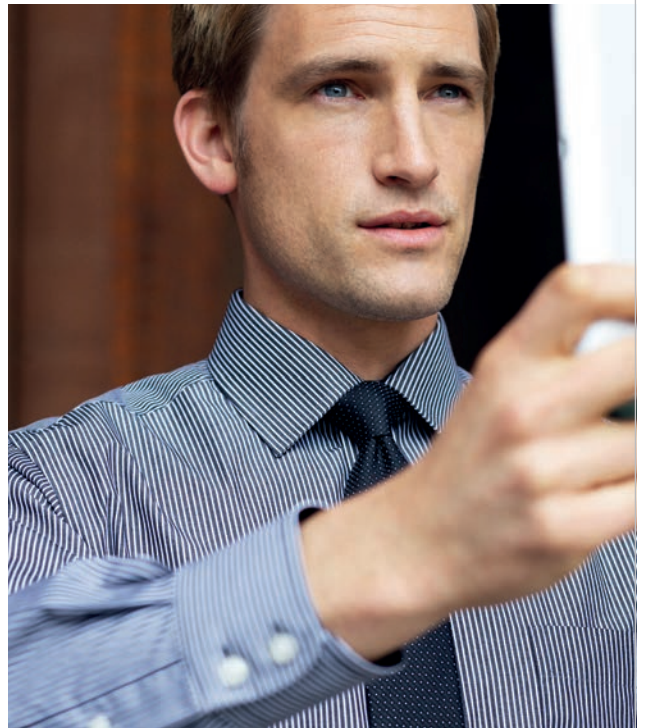
CAMPANIA Blouse
(Semi fitted, Single cuff)



C. Black/White Stripe



D. Candy Stripe
(Campania & Liguria only)



COTTON RICH



60% Cotton / 40% Polyester - EASY IRON - SHORT SLEEVE

MEN'S **SAVONA** Classic fit, Short sleeve

WOMEN'S **LIGURIA** Semi fitted, Short sleeve

- Chest pocket (Savona)
- Contrast inner collar and cuff (colours B, C & D only)
- Short sleeve with 2 button cuff detail (Liguria)

CONTRAST INTERNAL COLLAR & CUFF



SAVONA Shirt
(Classic fit, Short sleeve)

Codes & Colours:

- 7595A White Waffle Weave
- 7595B Sky Blue/Magenta Stripe
- 7595C Black/White Stripe

Sizes: 14.5" - 20"

LIGURIA Blouse
(Semi fitted, Short sleeve)

Codes & Colours:

- 2240A White Waffle Weave
- 2240B Sky Blue/Magenta Stripe
- 2240C Black/White Stripe
- 2240D Candy Stripe

Sizes: 6 - 24 regular





A. White Waffle Weave



B. Sky Blue/Magenta Stripe



C. Black/White Stripe



D. Candy Stripe
(Liguria & Campania only)



LIGURIA Blouse
(Semi fitted, Short sleeve)



SAVONA Shirt
(Classic fit, Short sleeve)

SAVONA shirt & LIGURIA blouse match
MANTOVA shirt & CAMPANIA blouse.
See pages 64 and 65 for more information.



BROOK TAVERNER
corporate tailoring

www.brooktaverner.com