

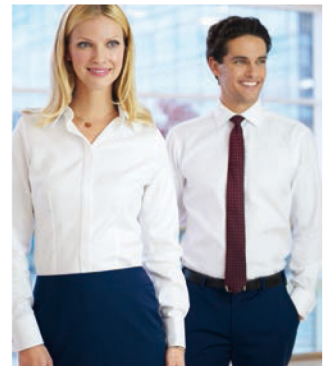
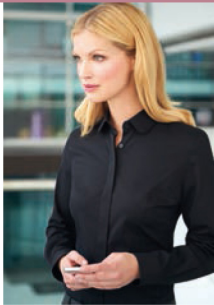


reuniform



# SOPHISTICATED

AND SHIRT & BLOUSE COLLECTIONS  
2016



## SOPHISTICATED COLLECTION

18 piece collection in a choice of up to 7 colours

### WOMEN'S

CALVI Jacket	10 - 11
BRONTE Skirt	10
GENOA Trouser	11
SCAPOLI Waistcoat	11
NOVARA Jacket	12 - 13
NUMANA Skirt	12 - 13
SUSA Jacket	14 - 15 - 16
MIRANDA Trouser	14 - 15
OPERA Jacket	16 - 17
VARESE Trouser	16 - 17
TERAMO Dress	18 - 19

### WOMEN'S COLLECTION SUMMARY

Women's Jackets	20 - 21
Women's Waistcoat, Dress, Belts & Skirts	22 - 23
Women's Trousers & Trouser Profiles	24 - 25

### MEN'S

CASSINO Jacket	04 - 05
CASSINO Trouser	04 - 05
AVALINO Jacket	06 - 07
AVALINO Trouser	06 - 07
IMOLA Jacket	08 - 09
IMOLA Trouser	08 - 09
BUSSO Waistcoat	08 - 09

### MEN'S COLLECTION SUMMARY

Men's Jackets, Waistcoat & Trousers	26 - 27 - 28
-------------------------------------	--------------

COLOUR CHOICE & AFTERCARE	29
---------------------------	----





# SOPHISTICATED COLLECTION



- 54% Polyester, 44% Wool, 2% Lycra
- 270gm fabric, Nanotech stain-resistant finish
- Machine washable tailoring
- Ideal for management, financial/banking sectors, hotels, front of house

**CASSINO Jacket**

(Mid Blue)

Slim fit, single breasted, 2 button jacket, side vents, ticket pocket, slim lapels with saddle stitching, piano faced interior with slim pocket jets.

**Prato Shirt**

(White)

Slim fit, double cuff.



**Cassino Trouser**

(Mid Blue)

Slim fit, flat front trouser;  
2 side pockets,  
1 rear pocket.

**Prato Shirt**

(White)

Slim fit, double cuff.

NEW  
COLOURWAY



# SLIM FIT SUITING



Avalino Jacket  
(Light Grey)

TAILORED FIT  
SUITING

**Mantova Shirt**  
(Black/White Stripe)  
Classic fit, long sleeve, chest pocket,  
2 button cuff, contrast inner collar and cuff.

**Avalino Trousers**  
(Black)  
Tailored fit, flat front trouser,  
2 side pockets, 1 rear pocket.



**Interior styling**  
on all men's jackets

# TAILORED FIT



**AVALINO Jacket**  
(Light Grey)  
Tailored fit, single  
breasted, 2 button jacket,  
side vents, 3 inside pockets,  
mobile phone pocket.

**Pisa Shirt**  
(Sky Blue)

**NEW!**  
AVAILABLE TO SIZE 56R

## IMOLA Jacket

(Navy Pinstripe)

Classic fit, single breasted,  
3 button jacket, centre vent,  
3 inside pockets,  
mobile phone pocket.

Andora Shirt

(White Herringbone)



# CLASSIC FIT

## Imola Trousers

(Navy)

Classic fit, single pleat,  
2 side pockets, 1 rear pocket.

## Busso Waistcoat

(Navy)

Cloth backed, 2 welt pockets,  
5 button front.





# CLASSIC FIT SUITING



**Calvi Jacket**  
(Light Grey)

**Bronte Skirt**  
(Light Grey)  
Flared A-line skirt, centre front seam with pleat detail, narrow waistband, fob pocket with saddle stitching, full stretch lining.

**Franca Blouse**  
(Red Stripe)  
Semi fitted, Long sleeve.



### CALVI Jacket

(Light Grey)

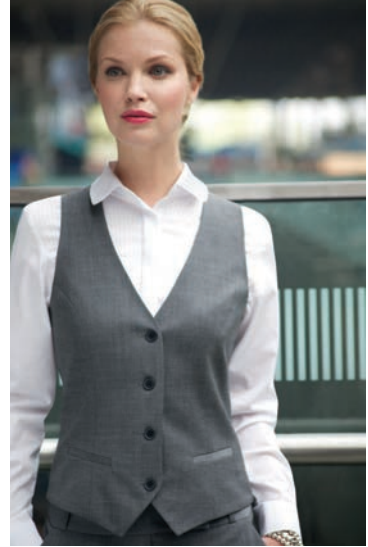
Short, slim fit, 2 button jacket, cutaway front, slim notch lapel, front breast darts, jetted pockets, plain back, tailored back panels, 1 inside pocket.

Treviso Blouse  
(Blue)



### Scapoli Waistcoat (Light Grey)

Cloth backed, 2 welt pockets, 4 button front.



SELECTED STYLES  
NOW FROM SIZE 4

### Genoa Trouser (Light Grey)

Slim leg, front hook fastening, 2 side pockets, mock rear pockets, belt loops.

Novara Jacket  
(Mid Blue)

Numana Skirt  
(Mid Blue)



TAILORED  
FIT JACKET

**Felina Blouse**

(White)

Short sleeve, round neck, front pleat detail, bust darts, rear gold zip detail.

**Numana Skirt**

(Mid Blue)

Straight skirt, centre vent, shaped back panels, full stretch lining.



# TAILORED FIT

**NOVARA Jacket**

(Mid Blue)

Tailored fit, 2 button jacket, peaked lapel, contrast detail on lapel and pockets, centre vent, tailored back panels, 1 inside pocket.



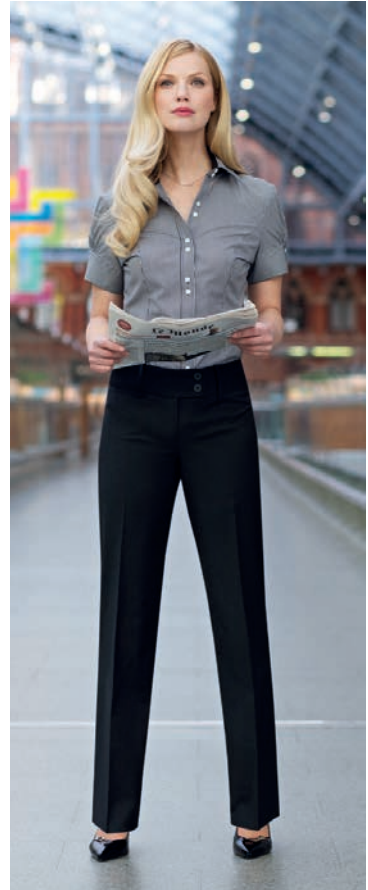
## SUSA Jacket

(Charcoal)

Tailored fit, 3 button jacket, rounded lapel and pockets, 1 inside pocket, plain back.

## Treviso Blouse

(White)



## Miranda Trouser

(Black)

Parallel leg trouser; low waist, front double button fastening, key card pocket, mock rear pockets.

## Liguria Blouse

(Black/White Stripe)

Semi fitted, short sleeve, 2 button adjustable cuff.

# TAILORED FIT JACKET

# TAILORED FIT



Susa Jacket  
(Black)

Miranda Trouser  
(Black)

# CLASSIC FIT JACKET



Opera Jacket  
(Black)

Varese Trouser  
(Black)



**Campania Blouse**  
(Candy Stripe)  
Semi fitted, long sleeve,  
contrast cuff.

**Varese Trouser**  
(Black)  
Straight leg trouser,  
single button front fastening,  
key card pocket.



# CLASSIC FIT JACKET

**OPERA Jacket**  
(Navy)  
Classic fit, 2 button jacket,  
2 slanted flap pockets,  
1 inside pocket, centre vent.



**Susa Jacket**

(Black)

Tailored fit,  
3 button jacket,  
rounded lapel  
and pockets,  
1 inside pocket,  
plain back.



# COMPLEMENTARY STYLES

**Teramo Dress**  
(Charcoal)



# ESSENTIAL BUSINESS WEAR



## TERAMO Dress

(Black)

Shift dress with princess seam,  
short sleeve, centre vent,  
full stretch lining.

WOMEN'S

# SOPHISTICATED COLLECTION

54% Polyester / 44% Wool / 2% Lycra

270gm fabric, Nanotech stain-resistant finish, machine washable

**SLIM FIT**  
JACKET FROM  
SIZE 4R



**TAILORED  
FIT**  
JACKET



**CALVI Jacket** (Light Grey)

Short, slim fit 2 button jacket, cutaway front, slim notch lapel, front breast darts, jetted pockets, plain back, tailored back panels, 1 inside pocket.

**Sizes:** 6 - 16 petite  
4 - 18 regular  
6 - 16 long

**Codes & Colours:**

2252A Navy  
2252C Charcoal  
2252D Black  
2252G Light Grey  
2252H Mid Blue

**SUSA Jacket** (Charcoal)

Tailored fit, 3 button jacket, rounded lapel and pockets, plain back, 1 inside pocket.

**Sizes:** 6 - 16 petite  
6 - 24 regular  
8 - 18 long

**Codes & Colours:**

2179A Navy  
2179B Navy Pinstripe  
2179C Charcoal  
2179D Black  
2179F Charcoal Pinstripe  
2179G Light Grey

**TAILORED  
FIT  
JACKET**



**CLASSIC  
FIT  
JACKET**



**NOVARA Jacket (Mid Blue)**  
Tailored fit, 2 button jacket, peaked lapel, contrast detail on lapel and pockets, centre vent, tailored back panels, 1 inside pocket.

**Sizes:** 6 - 18 petite\*  
6 - 24 regular  
8 - 18 long

**Codes & Colours:**  
2222A Navy  
2222B Navy Pinstripe  
2222C Charcoal  
2222D Black  
2222F Charcoal Pinstripe  
2222G Light Grey  
2222H Mid Blue

\*Size 18 petite available in solid colours only

**OPERA Jacket (Navy)**  
Classic fit, 2 button jacket, 2 slanted flap pockets, centre vent, 1 inside pocket.

**Sizes:** 6 - 16 petite  
6 - 24 regular  
10 - 24 long

**Codes & Colours:**  
2250A Navy  
2250C Charcoal  
2250D Black  
2250G Light Grey

# WOMEN'S SOPHISTICATED COLLECTION

54% Polyester / 44% Wool / 2% Lycra  
270gm fabric, Nanotech stain-resistant finish, machine washable

## SUPERB WAISTCOAT & DRESS



## ACCESSORIES



2248A Navy/Nude



2248D Black/Nude

### SCAPOLI Waistcoat (Navy)

Cloth backed,  
4 button front,  
2 welt pockets.

Sizes: 6 - 24 long

#### Codes & Colours:

2200A Navy  
2200B Navy Pinstripe  
2200C Charcoal  
2200D Black  
2200F Charcoal Pinstripe  
2200G Light Grey  
2200H Mid Blue

### TERAMO Dress (Charcoal)

Shift dress with princess seam,  
short sleeve, centre vent,  
full stretch lining.

Sizes: 6 - 24 regular

#### Codes & Colours:

2238A Navy  
2238C Charcoal  
2238D Black  
2238G Light Grey  
2238H Mid Blue

### FASHION Belts (Twin Packs)

Simple women's fashion belts  
with gold buckle which  
complement our dresses  
and trousers perfectly.

Sizes: XS 6  
S 8 - 10  
M 12 - 14  
L 16 - 18  
XL 20 - 22 - 24

#### Codes & Colours:

2248A Navy/Nude  
2248D Black/Nude

**NEW  
STYLE**  
SKIRT



**NOW  
AVAILABLE**  
FROM  
SIZE 4R



**BRONTE Skirt (Charcoal)**

Flared A-line skirt, centre front seam with pleat detail, narrow waistband, fob pocket with saddle stitching, full stretch lining.

**Sizes:** 6 - 24 regular - 22"

**Codes & Colours:**

- 2253A Navy
- 2253C Charcoal
- 2253D Black
- 2253G Light Grey

**NUMANA Skirt (Mid Blue)**

Straight skirt, centre vent, shaped back panels, full stretch lining.

**Sizes:** 4 - 24 regular - 22"\*  
8 - 24 long - 25"  
8 - 24 x-long - 27"

**Codes & Colours:**

- 2224A Navy
- 2224B Navy Pinstripe
- 2224C Charcoal
- 2224D Black
- 2224F Charcoal Pinstripe
- 2224G Light Grey
- 2224H Mid Blue

\* Size 4R available in solid colours only

# WOMEN'S SOPHISTICATED COLLECTION

54% Polyester / 44% Wool / 2% Lycra  
270gm fabric, Nanotech stain-resistant finish, machine washable

**SLIM**  
LEG  
PROFILE



**STRAIGHT**  
LEG  
PROFILE



**PARALLEL**  
LEG  
PROFILE



**NOW**  
AVAILABLE  
FROM  
SIZE 4

**GENOA Trousers** (Mid Blue)  
Slim leg trouser, front hook fastening,  
2 side pockets, mock rear  
pockets, half lined, belt loops.

**Sizes:** 4\* - 24 waist in leg lengths  
S-27", R-29", L-31", XL-33"  
& 36" unfinished

**Codes & Colours:**

2234A Navy  
2234B Navy Pinstripe  
2234C Charcoal  
2234D Black  
2234F Charcoal Pinstripe  
2234G Light Grey  
2234H Mid Blue

**VARESE Trousers** (Navy)  
Straight leg trouser, single button  
front fastening, key card pocket.

**Sizes:** 6 - 24 waist in leg lengths  
S-27", R-29", L-31", XL-33"  
& 36" unfinished

**Codes & Colours:**

2109A Navy  
2109B Navy Pinstripe  
2109C Charcoal  
2109D Black  
2109F Charcoal Pinstripe  
2109G Light Grey

**MIRANDA Trousers** (Light Grey)  
Parallel leg trouser, low waist,  
front double button fastening,  
key card pocket, mock rear pockets.

**Sizes:** 6 - 24 waist in leg lengths  
S-27", R-29", L-31", XL-33"  
& 36" unfinished

**Codes & Colours:**

2181A Navy  
2181B Navy Pinstripe  
2181C Charcoal  
2181D Black  
2181F Charcoal Pinstripe  
2181G Light Grey

\*Size 4 available in solid colours only



# LEG PROFILES

**SLIM**  
LEG  
PROFILE



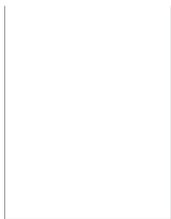
**STRAIGHT**  
LEG  
PROFILE



**PARALLEL**  
LEG  
PROFILE



**GENOA Trousers**  
(Mid Blue)  
Slim leg profile.



\*21cm



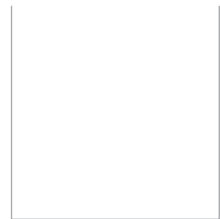
**VARESE Trousers**  
(Navy)  
Straight leg profile.



\*22cm



**MIRANDA Trousers**  
(Light Grey)  
Parallel leg profile.



\*23cm



\* Half hem measure at size 12

MEN'S

# SOPHISTICATED COLLECTION

54% Polyester / 44% Wool / 2% Lycra  
270gm fabric, Nanotech stain-resistant finish, machine washable

SLIM FIT  
JACKET



SLIM FIT  
TROUSER



**CASSINO Jacket** (Mid Blue)

Slim fit, single breasted, 2 button jacket, side vents, ticket pocket, slim lapels with saddle stitching, piano faced interior with slim pocket jets.

**Sizes:** 34" - 44" short  
34" - 46" regular  
34" - 44" long

**Codes & Colours:**

5985A Navy  
5985C Charcoal  
5985D Black  
5985G Light Grey  
5985H Mid Blue

**CASSINO Trousers** (Mid Blue)

Slim fit, flat front trouser, 2 side pockets, 1 rear pocket.

**Sizes:** 28" - 40" waist in leg lengths  
S-29.5", R-31.5", L-33"  
& 36" unfinished

**Codes & Colours:**

8655A Navy  
8655C Charcoal  
8655D Black  
8655G Light Grey  
8655H Mid Blue

Half hem width at waist size 34" = 19cm

**TAILORED  
FIT  
JACKET**

**NEW!**  
AVAILABLE  
TO SIZE  
56R



**TAILORED  
FIT  
TROUSER**



**AVALINO Jacket (Light Grey)**  
Tailored fit, single breasted,  
2 button jacket, side vents, 3 inside  
pockets, mobile phone pocket.

**Sizes:** 36" - 48" short  
34"\* - 56"\* regular  
38" - 48" long

**Codes & Colours:**  
5647A Navy  
5647B Navy Pinstripe  
5647C Charcoal  
5647D Black  
5647F Charcoal Pinstripe  
5647G Light Grey  
5647H Mid Blue

\* Sizes 34R to 56R available in solid colours only.  
Other colours available in sizes 36R to 52R

**AVALINO Trousers (Light Grey)**  
Tailored fit, flat front trousers,  
2 side pockets,  
1 rear pocket.

**Sizes:** 28" - 46"\* waist in leg lengths  
S-29.5", R-31.5", L-33"  
& 36" unfinished

**Codes & Colours:**  
8387A Navy  
8387B Navy Pinstripe  
8387C Charcoal  
8387D Black  
8387F Charcoal Pinstripe  
8387G Light Grey  
8387H Mid Blue

Half hem width at waist size 34" = 21 cm  
\* Waist size 46 available in solid colours only

MEN'S

# SOPHISTICATED COLLECTION

54% Polyester / 44% Wool / 2% Lycra  
270gm fabric, Nanotech stain-resistant finish, machine washable

**CLASSIC  
FIT  
JACKET**



**CLASSIC  
FIT  
TROUSER**



**IMOLA Jacket** (Navy Pinstripe)  
Classic fit, single breasted,  
3 button jacket, centre vent, 3 inside  
pockets, mobile phone pocket.

**Sizes:** 36" - 48" short  
36" - 56"\* regular  
38" - 48" long

**Codes & Colours:**

5646A Navy  
5646B Navy Pinstripe  
5646C Charcoal  
5646D Black  
5646F Charcoal Pinstripe

**IMOLA Trousers** (Black)  
Classic fit, single pleat,  
2 side pockets, 1 rear pocket.

**Sizes:** 28" - 52" waist in leg lengths  
S-29.5", R-31.5", L-33"  
& 36" unfinished

**Codes & Colours:**

8314A Navy  
8314B Navy Pinstripe  
8314C Charcoal  
8314D Black  
8314F Charcoal Pinstripe

**BUSSO Waistcoat** (Charcoal Pinstripe)  
Cloth backed, 2 welt  
pockets, 5 button front.

**Sizes:** 36" - 50" regular

**Codes & Colours:**

1074A Navy \*  
1074B Navy Pinstripe  
1074C Charcoal \*  
1074D Black \*  
1074F Charcoal Pinstripe  
1074G Light Grey  
1074H Mid Blue

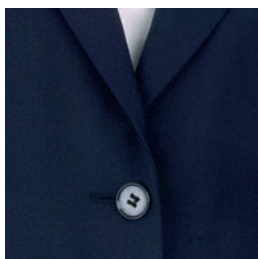
\* Size 56R available in solid Navy only

Half hem width at waist size 34" = 22cm

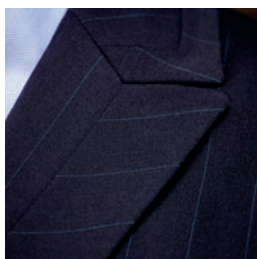
\* Waist sizes 50-52 available in solid colours only \* Available up to size 56R

# FABRIC COLOUR CHOICE

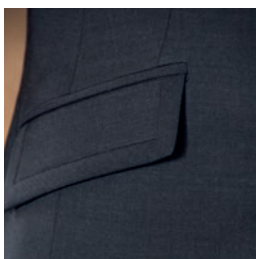
Our **SOPHISTICATED** collection is available in up to 7 fabric colour choices.



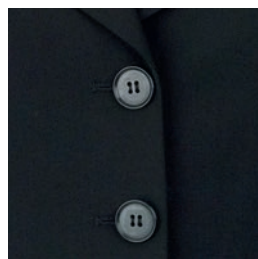
A. Navy



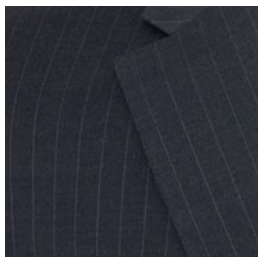
B. Navy Pinstripe



C. Charcoal



D. Black



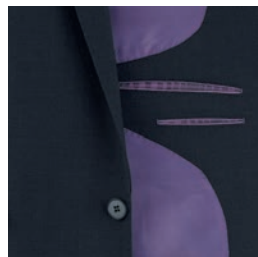
F. Charcoal Pinstripe



G. Light Grey



H. Mid Blue



Interior

## WASHCARE INSTRUCTIONS

### WASHING

For the best results ensure that the suit is washed separately & machine wash as wool. Garments will need to be removed immediately from the machine when the cycle has ended.

### DRYING

Place the jacket on the hanger, gently shake and re-shape by straightening seams. Fold the trousers to the front creases and hang over the bar on garment hanger. Allow both garments to dry naturally & keep away from direct heat. Do not tumble dry.

### FINISHING

If required, press the garments using a cool iron over a damp cloth.



MACHINE  
WASHABLE

**40°**

SUITABLE  
FOR DRY  
CLEANING



## SHIRT & BLOUSE COLLECTION

This 29 piece collection offers



### MEN'S

#### PREMIUM COTTON - EASY IRON

ANDORA Classic fit, Double cuff	32 - 33 - 34 - 37 - 38
ALTARE Classic fit, Single cuff	32 - 33 - 34
PRATO Slim fit, Double cuff	32 - 33 - 34 - 35

#### PREMIUM COTTON - EASY IRON

CHESTER Classic fit, Double cuff	42
CHEADLE Classic fit, Single cuff	42
CHELFORD Slim Fit, Double cuff	43

#### STRETCH COTTON BLEND - EASY IRON

PISA Slim fit, Single cuff	48 - 49
LUCCA Slim fit, Single cuff	52 - 53

#### COTTON RICH - EASY IRON

RAPINO Classic fit, Single cuff	54
ALBA Slim fit, Single cuff	56 - 57
ROSELLO Classic fit, Short sleeve	58 - 59

RUFINA Classic fit, Single cuff	60 - 61
ROCELLA Classic fit, Short sleeve	62 - 63

MANTOVA Classic fit, Single cuff	64 - 65
SAVONA Classic fit, Short sleeve	66 - 67

### WOMEN'S

#### PREMIUM COTTON - EASY IRON

VILLETA Semi fitted, Double cuff	32 - 33 - 34 - 37 - 38
OZZERO Semi fitted, Short sleeve	32 - 33 - 37

#### PREMIUM COTTON - EASY IRON

TREVISO Semi fitted, Single cuff	40 - 41
----------------------------------	---------

#### CREPE DE CHINE

FELINA Short sleeve blouse	40 - 41
RIOLA Long sleeve blouse	40 - 41

#### STRETCH COTTON BLEND - EASY IRON

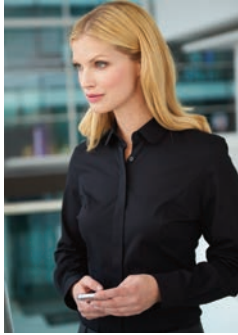
TREVI Semi fitted, Single cuff	46 - 47
SOAVE Semi fitted, Short sleeve	46 - 47
FRANCA Semi fitted, Single cuff	50 - 51

#### COTTON RICH - EASY IRON

PALENA Semi fitted, Single cuff	54 - 55
PADULI Semi fitted, Short sleeve	58 - 59

PERANO Semi fitted, Single cuff	60 - 61
PESCARA Semi fitted, Short sleeve	62 - 63

CAMPANIA Semi fitted, Single cuff	64 - 65
LIGURIA Semi fitted, Short sleeve	66 - 67



# SHIRT & BLOUSE COLLECTION

PREMIUM COTTON - CREPE DE CHINE - STRETCH COTTON BLEND - COTTON RICH



- Co-ordinating men's and women's business shirts and blouses
- Large choice of fabrics, fits & styles
- Ideal for all corporate arenas

# PREMIUM COTTON



## 100% SUPERFINE COTTON - EASY IRON

MEN'S **ANDORA** Classic fit, Double cuff **ALTARE** Classic fit, Single cuff **PRATO** Slim fit, Double cuff  
WOMEN'S **VILLETA** Semi fitted, Double cuff **OZZERO** Semi fitted, Short sleeve

- Double cuff with complementary silk cuff knots (except Altare & Ozzero)
- Taped seams
- Removable metal collar stiffeners (men's shirts)
- Men's extra long sleeve available



A. White Herringbone

E. Pink/Grey Stripe

**VILLETA Blouse (shown)**  
(Semi fitted, Double cuff)

**Codes & Colours:**

2247A White Herringbone  
2247B Blue Herringbone  
2247C Charcoal/White Stripe  
2247D Raspberry Stripe  
2247E Pink/Grey Stripe

**Sizes:** 6 - 24 regular

**OZZERO Blouse**  
(Semi fitted, Short sleeve)

**Codes & Colours:**

2249A White Herringbone  
2249B Blue Herringbone

**Sizes:** 6 - 24 regular



**PRATO shirt**  
(Slim fit, Double cuff)

**Codes & Colours:**

7720A White Herringbone  
7720B Blue Herringbone

**Sizes:** 14.5" - 18"

**ANDORA Shirt (shown)**  
(Classic fit, Double cuff)

**Codes & Colours:**

7656A White Herringbone  
7656AL White Herringbone  
Extra long sleeve 36.5"  
7656B Blue Herringbone  
7656BL Blue Herringbone  
Extra long sleeve 36.5"  
7656C Charcoal/White Stripe  
7656D Raspberry Stripe  
7656E Pink/Grey Stripe

**Sizes:** 14.5" - 20"

\* Extra long sleeve 36.5" at size 15.5"

**ALTARE Shirt**  
(Classic fit, Single cuff)

**Codes & Colours:**

7655A White Herringbone  
7655AL White Herringbone  
Extra long sleeve 36.5"  
7655B Blue Herringbone  
7655BL Blue Herringbone  
Extra long sleeve 36.5"

**Sizes:** 14.5" - 20"

\* Extra long sleeve available from size 15"



D. Raspberry Stripe

B. Blue Herringbone

C. Charcoal/White Stripe



**PRATO Shirt**  
(Slim fit, Double cuff)



**ANDORA Shirt**  
(Classic fit, Double cuff)



**ALTARE Shirt**  
(Classic fit, Single cuff)



**VILLETA Blouse**  
(Semi fitted, Double cuff)



**OZZERO Blouse**  
(Semi fitted, Short sleeve)

# PREMIUM COTTON



## 100% SUPERFINE COTTON - HERRINGBONE WEAVE - EASY IRON

MEN'S **ANDORA** Classic fit, Double cuff **ALTARE** Classic fit, Single cuff **PRATO** Slim fit, Double cuff

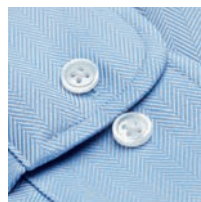
- Double cuff with complementary silk cuff knots (except Altare)
- Taped seams
- Removable metal collar stiffeners
- Men's extra long sleeve available



**ANDORA** Shirt  
(Classic fit, Double cuff)



**ALTARE** Shirt  
(Classic fit, Single cuff)



**PRATO** Shirt  
(Semi fitted, Double cuff)

**ANDORA** Shirt  
(Classic fit, Double cuff)

**Codes & Colours:**

- 7656A White Herringbone
- 7656AL White Herringbone  
Extra long sleeve 36.5"
- 7656B Blue Herringbone
- 7656BL Blue Herringbone  
Extra long sleeve 36.5"
- 7656C Charcoal/White Stripe
- 7656D Raspberry Stripe
- 7656E Pink/Grey Stripe

**Sizes:** 14.5" - 20"  
\* Extra long sleeve 36.5" at size 15.5"

**ANDORA is also available in 3 striped designs.**  
See pages 38 and 39 for more information.

**ALTARE** Shirt  
(Classic fit, Single cuff)

**Codes & Colours:**

- 7655A White Herringbone
- 7655AL White Herringbone  
Extra long sleeve 36.5"
- 7655B Blue Herringbone
- 7655BL Blue Herringbone  
Extra long sleeve 36.5"

**Sizes:** 14.5" - 20"  
\* Extra long sleeve 36.5" at size 15.5"

**PRATO** shirt  
(Slim fit, Double cuff)

- Codes & Colours:**
- 7720A White Herringbone
  - 7720B Blue Herringbone

**Sizes:** 14.5" - 18"

# SLIM FIT DOUBLE CUFF



ANDORA Shirt  
(Classic fit, Double cuff)



ALTARE Shirt  
(Classic fit, Single cuff)



PRATO Shirt  
(Slim fit, Double cuff)





SEMI FITTED  
DOUBLE CUFF

# PREMIUM COTTON



## 100% SUPERFINE COTTON - HERRINGBONE WEAVE - EASY IRON

WOMEN'S **VILLETA** Semi fitted, Double cuff

WOMEN'S **OZZERO** Semi fitted, Short sleeve

- Double cuff with complementary silk cuff knots (except Ozzero)
- Taped seams



**VILLETA Blouse**  
(Semi fitted, Double cuff)



**OZZERO Blouse**  
(Semi fitted, Short sleeve)

**VILLETA Blouse**  
(Semi fitted, Double cuff)

**Codes & Colours:**

- 2247A White Herringbone
- 2247B Blue Herringbone
- 2247C Charcoal/White Stripe
- 2247D Raspberry Stripe
- 2247E Pink/Grey Stripe

**Sizes:** 6 - 24 regular

**OZZERO Blouse**  
(Semi fitted, Short sleeve)

**Codes & Colours:**

- 2249A White Herringbone
- 2249B Blue Herringbone

**Sizes:** 6 - 24 regular



**VILLETA Blouse**  
(Semi fitted, Double cuff)



**OZZERO Blouse**  
(Semi fitted, Short sleeve)



# PREMIUM COTTON



## 100% SUPERFINE COTTON - STRIPED DESIGNS - EASY IRON

MEN'S **ANDORA** Classic fit, Double cuff

WOMEN'S **VILLETA** Semi fitted, Double cuff

- Double cuff with complementary silk cuff knots
- Taped seams
- Removable metal collar stiffeners (men's shirts)



**ANDORA Shirt**  
(Classic fit, Double cuff)



**VILLETA Blouse**  
(Semi fitted, Double cuff)



D. Raspberry Stripe

**ANDORA Shirt**  
(Classic fit, Double cuff)

### Codes & Colours:

- 7656A White Herringbone
- 7656AL White Herringbone  
Extra long sleeve 36.5"
- 7656B Blue Herringbone
- 7656BL Blue Herringbone  
Extra long sleeve 36.5"
- 7656C Charcoal/White Stripe
- 7656D Raspberry Stripe
- 7656E Pink/Grey Stripe

**Sizes:** 14.5" - 20"  
\* Extra long sleeve 36.5" at size 15.5"

**VILLETA Blouse**  
(Semi fitted, Double cuff)

### Codes & Colours:

- 2247A White Herringbone
- 2247B Blue Herringbone
- 2247C Charcoal/White Stripe
- 2247D Raspberry Stripe
- 2247E Pink/Grey Stripe

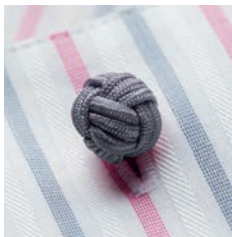
**Sizes:** 6 - 24 regular



C. Charcoal/White Stripe



D. Raspberry Stripe



E. Pink/Grey Stripe

CLASSIC FIT  
DOUBLE CUFF



C. Charcoal/White Stripe

D. Raspberry Stripe

E. Pink/Grey Stripe

SEMI  
FITTED  
3 BUTTON CUFF





# PREMIUM COTTON



## 100% SUPERFINE COTTON - EASY IRON - LONG SLEEVE

WOMEN'S **TREVISO** Semi fitted, Single cuff

- Single 3 button cuff
- Classic button up collar



A. White

B. Blue

**TREVISO Blouse**  
(Semi fitted, Single cuff)

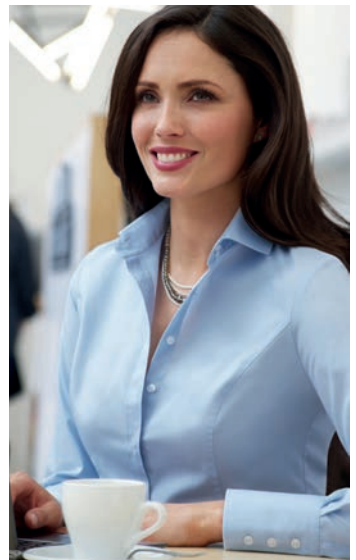
**Codes & Colours:**  
2244A White  
2244B Blue

**Sizes:** 6 - 24 regular



**TREVISO Blouse**  
(Semi fitted, Single cuff)

**CHESTER Shirt**  
(Classic fit, Double cuff)



TREVISO blouse matches CHESTER, CHEADLE & CHELFORD shirts.  
See pages 42 and 43 for more information.

# PREMIUM COTTON



## 100% COTTON POPLIN WEAVE - EASY IRON - LONG SLEEVE

MEN'S **CHESTER** Classic fit, Double cuff

MEN'S **CHEADLE** Classic fit, Single cuff

MEN'S **CHELFORD** Slim fit, Double cuff

- Taped seams
- Removable metal collar stiffeners
- Men's extra long sleeve available



**CHESTER** Shirt  
(Classic fit, Double cuff)

**Codes & Colours:**

7642A White  
7642B Blue

**Sizes:** 14.5" - 20"



**CHESTER** Shirt  
(Classic fit, Double cuff)

**CHEADLE** Shirt  
(Classic fit, Single cuff)

**Codes & Colours:**

7641A White  
7641AL White  
7641B Blue  
Extra long sleeve 36.5"

**Sizes:** 14.5" - 20"  
\* Extra long sleeve 36.5" at size 15.5"



**CHEADLE** Shirt  
(Classic fit, Single cuff)

# CLASSIC FIT

All match **TREVISO** blouse.

See pages 40 and 41 for more information.

**CHELFORD Shirt**  
(Slim fit, Double cuff)

**Codes & Colours:**  
7643A White  
7643B Blue

**Sizes:** 14.5" - 18"



**CHELFORD Shirt**  
(Slim fit, Double cuff)

**SLIM FIT**  
**DOUBLE CUFF**



NEW  
CREPE  
DE CHINE

AVAILABLE TO  
SIZE 30

A. White



# CREPE DE CHINE



**94% Polyester / 6% Elastane CREPE DE CHINE - SHORT & LONG SLEEVE**

WOMEN'S **FELINA** Short sleeve

WOMEN'S **RIOLA** Long sleeve

- Short & long sleeve ladies' blouse, round neck, front pleat detail, bust darts
- Single gold button cuff (Riola)
- Rear gold zip detail
- Easy care, machine washable at 30°



B. Cream

**FELINA Blouse**  
(Short sleeve)

**Codes & Colours:**  
2265A White  
2265B Cream

**Sizes:** 6 - 30 regular



**FELINA Blouse**  
(Short sleeve)

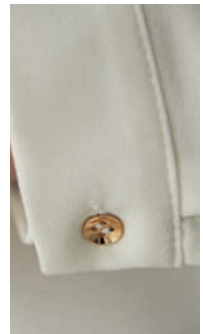
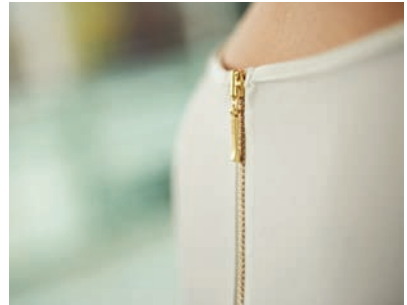
**RIOLA Blouse**  
(Long sleeve)

**Codes & Colours:**  
2264A White  
2264B Cream

**Sizes:** 6 - 30 regular



**RIOLA Blouse**  
(Long sleeve)



Back collar zip and button cuff detail

# STRETCH COTTON BLEND



**57% Polyester / 39% Cotton / 4% Elastane - EASY IRON**

WOMEN'S **TREVI** Semi fitted, Long sleeve, Single cuff

WOMEN'S **SOAVE** Semi fitted, Short sleeve

- Fly front
- Rounded collar
- Single button cuff (Trevi)



NEW TREVI & SOAVE  
SEMI FITTED



**TREVI Blouse**  
(Semi fitted, Single cuff)



**SOAVE Blouse**  
(Semi fitted, Short sleeve)



A. White



B. Sky Blue



D. Black

**TREVI Blouse**  
(Semi fitted, Single cuff)

**Codes & Colours:**  
2268A White  
2268B Sky Blue  
2268D Black

**Sizes:** 6 - 24 regular

**SOAVE Blouse**  
(Semi fitted, Short sleeve)

**Codes & Colours:**  
2269A White  
2269B Sky Blue  
2269D Black

**Sizes:** 6 - 24 regular



TREVI & SOAVE blouses match men's PISA shirt.  
See pages 48 and 49 for more information.

BROOK TAVERNER  
corporate tailoring

# NEW PISA SLIM FIT SHIRT





# STRETCH COTTON BLEND



57% Polyester / 39% Cotton / 4% Elastane - EASY IRON - LONG SLEEVE

MEN'S PISA Slim fit, Long sleeve, Single cuff

- Single 2 button cuff
- Twin rear darts for defined silhouette



A. White



B. Blue



D. Black

PISA Shirt  
(Slim fit, Single cuff)

Codes & Colours:  
7721A White  
7721B Sky Blue  
7721D Black

Sizes: 14.5" - 18"



PISA Shirt  
(Slim fit, Single cuff)

PISA shirt matches women's TREVI & SOAVE blouses.  
See pages 46 and 47 for more information.

# STRETCH COTTON BLEND



**57% Polyester / 39% Cotton / 4% Elastane - EASY IRON - LONG SLEEVE**

WOMEN'S **FRANCA** Semi fitted, Single cuff

- Fly front
- Contrast White rounded collar and contrast White single button cuff



**SEMI FITTED**  
CONTRAST SINGLE CUFF

**FRANCA Blouse**  
(Semi fitted, Single cuff)

**Codes & Colours:**

- 2251A White with front panel stripe
- 2251B Sky Blue
- 2251C Blue Stripe
- 2251D Lilac Stripe
- 2251E Red Stripe

**Sizes:** 6 - 24 regular

FRANCA blouse matches men's LUCCA shirt.  
See pages 52 and 53 for more information.



A. White with front panel stripe



**FRANCA Blouse**  
(Semi fitted, Single cuff)



B. Sky Blue



C. Blue Stripe



D. Lilac Stripe



E. Red Stripe

# STRETCH COTTON BLEND



**57% Polyester / 39% Cotton / 4% Elastane - EASY IRON - LONG SLEEVE**

MEN'S LUCCA Slim fit, Single cuff

- Contrast white collar with single 2 button cuff
- Twin rear darts for defined silhouette

**LUCCA Shirt**  
(Slim fit, Single cuff)

**Codes & Colours:**

7658B Sky Blue  
7658C Blue stripe  
7658D Lilac stripe  
7658E Red stripe

**Sizes:** 14.5" - 18"



B. Sky Blue

C. Blue Stripe

D. Lilac Stripe

E. Red Stripe

LUCCA shirt matches women's FRANCA blouse.  
See pages 50 and 51 for more information.

# SLIM FIT

SINGLE CUFF



LUCCA Shirt  
(Slim fit, Single cuff)

# COTTON RICH



**55% Cotton / 45% Polyester - EASY IRON - LONG SLEEVE**

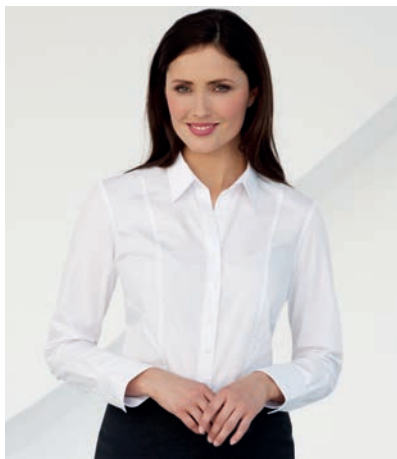
MEN'S **RAPINO** Classic fit, Single cuff

WOMEN'S **PALENA** Semi fitted, Single cuff

- Chest pocket (Rapino)
- Single 2 button cuff (Palena)



## CLASSIC FIT SINGLE CUFF



## SEMI FITTED SINGLE CUFF

**RAPINO** Shirt  
(Classic fit, Single cuff)

**Codes & Colours:**

7539A White  
7539B Pink  
7539D Black  
7539E Blue

**Sizes:** 14.5" - 20"



**RAPINO** Shirt  
(Classic fit, Single cuff)

**PALENA Blouse**  
(Semi fitted, Single cuff)

**Codes & Colours:**  
2214A White  
2214E Blue

**Sizes:** 4 - 30 regular



**PALENA Blouse**  
(Semi fitted, Single cuff)

**Codes & Colours:**  
2214B Pink  
2214D Black

**Sizes:** 6 - 24 regular

**EXTENDED SIZE RANGE  
NOW AVAILABLE**



RAPINO shirt & PALENA blouse match  
men's ALBA & ROSELLO shirts and women's PADULI blouse.  
See pages 56, 57, 58 and 59 for more information.

# COTTON RICH



**55% Cotton / 45% Polyester - EASY IRON - LONG SLEEVE**

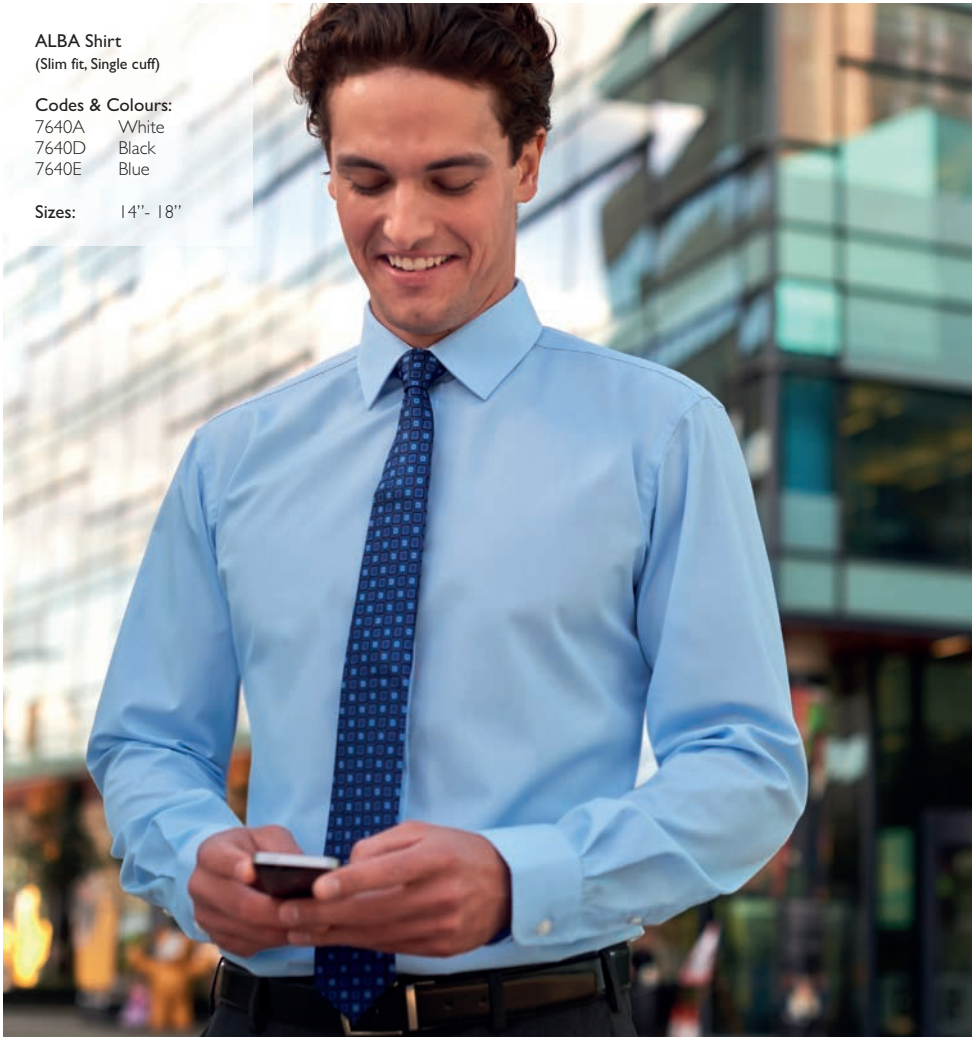
MEN'S ALBA Slim fit, Single cuff

- Twin rear darts for a defined silhouette
- Semi cutaway collar

ALBA Shirt  
(Slim fit, Single cuff)

Codes & Colours:  
7640A White  
7640D Black  
7640E Blue

Sizes: 14" - 18"



ALBA shirt matches  
men's RAPINO & ROSELLO shirts and women's PALENA & PADULI blouses.  
See pages 54, 55, 58 and 59 for more information.



# SLIM FIT



ALBA Shirt  
(Slim fit, Single cuff)



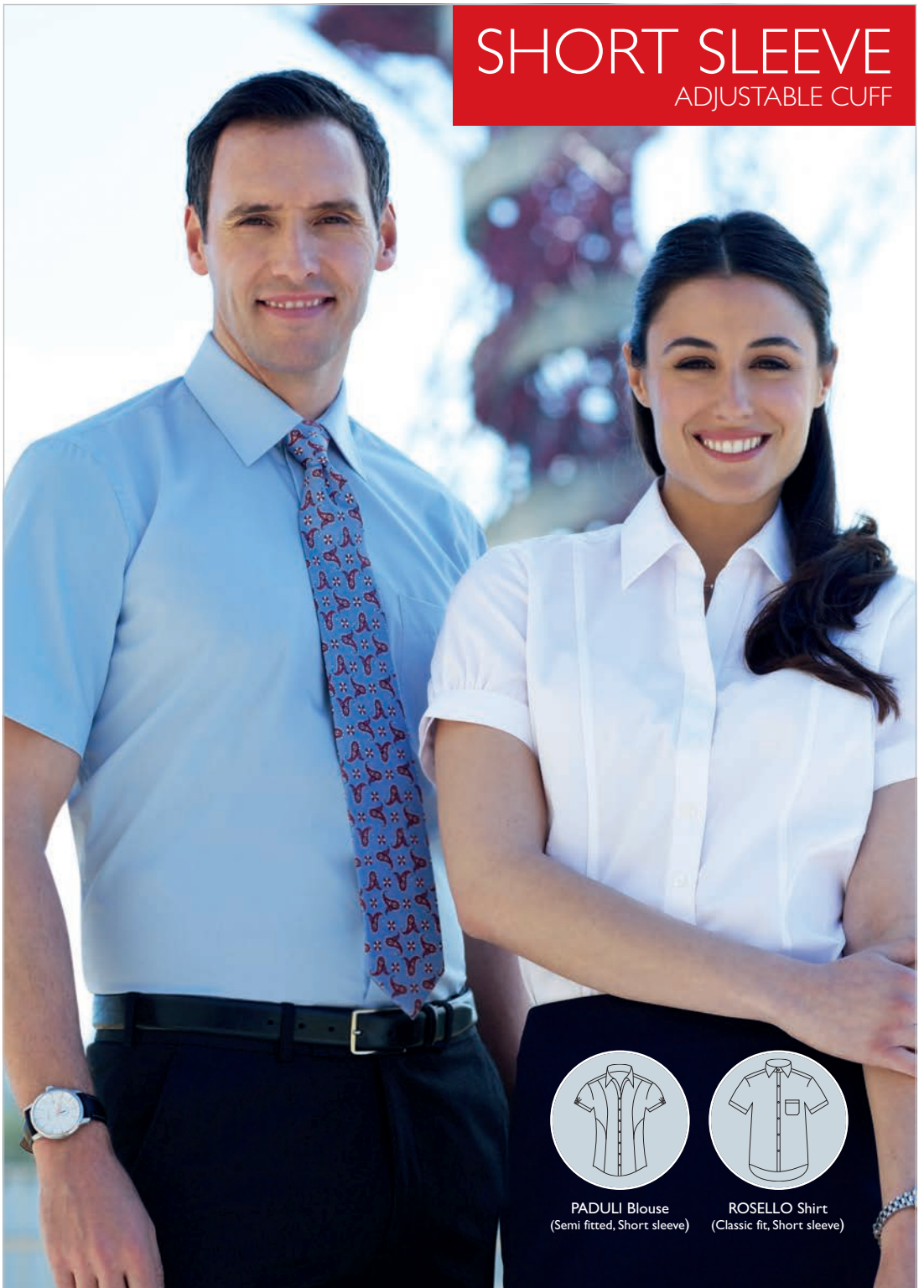
A. White

E. Blue

D. Black

# SHORT SLEEVE

ADJUSTABLE CUFF



PADULI Blouse  
(Semi fitted, Short sleeve)



ROSELLO Shirt  
(Classic fit, Short sleeve)

# COTTON RICH



**55% Cotton / 45% Polyester - EASY IRON - SHORT SLEEVE**

WOMEN'S **PADULI** Semi fitted, Short sleeve

MEN'S **ROSELLO** Classic fit, Short sleeve

- Chest pocket (Rosello)
- Short sleeve with adjustable cuff (Paduli)

## EXTENDED SIZE RANGE NOW AVAILABLE

E. Blue



**PADULI Blouse**  
(Semi fitted, Short sleeve)

**Codes & Colours:**  
2216A White  
2216E Blue

**Sizes:** 4 - 30 regular

**Codes & Colours:**  
2216B Pink  
2216D Black

**Sizes:** 6 - 24 regular

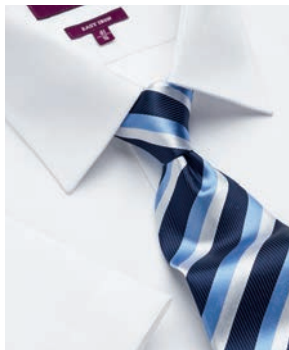
**ROSELLO Shirt**  
(Classic fit, Short sleeve)

**Codes & Colours:**  
7541A White  
7541B Pink  
7541D Black  
7541E Blue

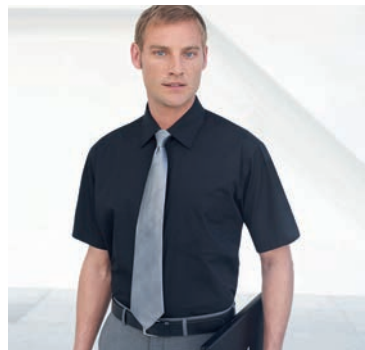
**Sizes:** 14.5" - 20"



B. Pink PADULI adjustable cuff detail



A. White



D. Black

PADULI blouse & ROSELLO shirt match men's ALBA & RAPINO shirts & women's PALENA blouse.  
See pages 54, 55, 56 and 57 for more information.

# COTTON RICH



**60% Cotton / 40% Polyester - EASY IRON - LONG SLEEVE**

WOMEN'S **PERANO** Semi fitted, Single cuff

MEN'S **RUFINA** Classic fit, Single cuff

- Chest pocket (Rufina)
- Single 2 button cuff (Perano)



A. White/Grey Stripe



B. Pink/Grey Stripe



C. Blue/White Stripe

**PERANO Blouse**  
(Semi fitted, Single cuff)

- Codes & Colours:**  
2215A White/Grey Stripe  
2215B Pink/Grey Stripe  
2215C Blue/White Stripe

**Sizes:** 6 - 24 regular

**RUFINA Shirt**  
(Classic fit, Single cuff)

- Codes & Colours:**  
7540A White/Grey Stripe  
7540B Pink/Grey Stripe  
7540C Blue/White Stripe

**Sizes:** 14.5"- 20"



**PERANO Blouse**  
(Semi fitted, Long sleeve)



**RUFINA Shirt**  
(Classic fit, Long sleeve)



PERANO blouse & RUFINA shirt match PESCARA blouse & ROCCELLA shirt.  
See pages 62 and 63 for more information.

# COTTON RICH



**60% Cotton / 40% Polyester - EASY IRON - SHORT SLEEVE**

WOMEN'S **PESCARA** Semi fitted, Short sleeve

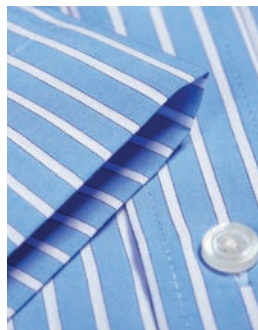
MEN'S **ROCCELLA** Classic fit, Short sleeve

- Chest pocket (Roccella)
- Short sleeve with adjustable cuff (Pescara)

A. White/Grey Stripe



ADJUSTABLE  
CUFF



PESCARA blouse & ROCCELLA shirt match PERANO blouse & RUFINA shirt.  
See pages 60 and 61 for more information.

C. Blue/White Stripe

# SHORT SLEEVE



**PESCARA Blouse**  
(Semi fitted, Short sleeve)



**ROCCELLA Shirt**  
(Classic fit, Short sleeve)

**PESCARA Blouse**  
(Semi fitted, Short sleeve)

**Codes & Colours:**

2217A White/Grey Stripe  
2217B Pink/Grey Stripe  
2217C Blue/White Stripe

**Sizes:** 6 - 24 regular

**ROCCELLA Shirt**  
(Classic fit, Short sleeve)

**Codes & Colours:**

7542A White/Grey Stripe  
7542B Pink/Grey Stripe  
7542C Blue/White Stripe

**Sizes:** 14.5" - 20"

B. Pink/Grey Stripe

# COTTON RICH



**60% Cotton / 40% Polyester - EASY IRON - LONG SLEEVE**

MEN'S **MANTOVA** Classic fit, Single cuff

WOMEN'S **CAMPANIA** Semi fitted, Single cuff

- Chest pocket (Mantova)
- Contrast inner collar and cuff (colours B, C & D only)
- Double button fastening (Campania)

MANTOVA shirt  
& CAMPANIA blouse  
match SAVONA shirt  
& LIGURIA blouse.  
See pages 66 and 67 for  
more information.

**MANTOVA Shirt**  
(Classic fit, Single cuff)

**Codes & Colours:**

- 7594A White Waffle Weave
- 7594B Sky Blue/Magenta Stripe
- 7594C Black/White Stripe

**Sizes:** 14.5" - 20"



**MANTOVA Shirt**  
(Classic fit, Single cuff)



**A. White**  
Waffle Weave



**B. Sky Blue/  
Magenta Stripe**

**CAMPANIA Blouse**  
(Semi fitted, Single cuff)

**Codes & Colours:**

- 2239A White Waffle Weave
- 2239B Sky Blue/Magenta Stripe
- 2239C Black/White Stripe
- 2239D Candy Stripe

**Sizes:** 6 - 24 regular



**CAMPANIA Blouse**  
(Semi fitted, Single cuff)

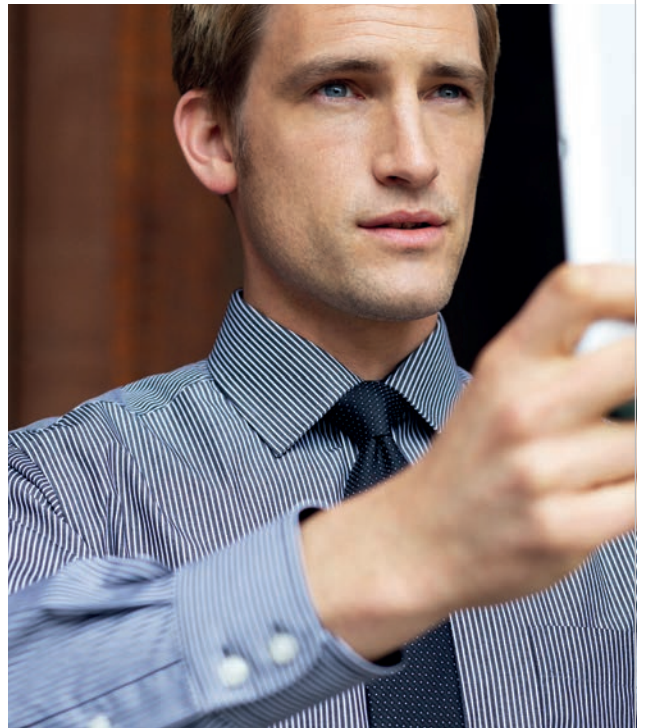


**C. Black/White Stripe**



**D. Candy Stripe**  
(Campania & Liguria only)





# COTTON RICH



**60% Cotton / 40% Polyester - EASY IRON - SHORT SLEEVE**

MEN'S **SAVONA** Classic fit, Short sleeve

WOMEN'S **LIGURIA** Semi fitted, Short sleeve

- Chest pocket (Savona)
- Contrast inner collar and cuff (colours B, C & D only)
- Short sleeve with 2 button cuff detail (Liguria)

## CONTRAST INTERNAL COLLAR & CUFF



**SAVONA Shirt**  
(Classic fit, Short sleeve)

**Codes & Colours:**

- 7595A White Waffle Weave
- 7595B Sky Blue/Magenta Stripe
- 7595C Black/White Stripe

**Sizes:** 14.5" - 20"

**LIGURIA Blouse**  
(Semi fitted, Short sleeve)

**Codes & Colours:**

- 2240A White Waffle Weave
- 2240B Sky Blue/Magenta Stripe
- 2240C Black/White Stripe
- 2240D Candy Stripe

**Sizes:** 6 - 24 regular





A. White Waffle Weave



B. Sky Blue/Magenta Stripe



C. Black/White Stripe



D. Candy Stripe  
(Liguria & Campania only)



**LIGURIA Blouse**  
(Semi fitted, Short sleeve)



**SAVONA Shirt**  
(Classic fit, Short sleeve)

SAVONA shirt & LIGURIA blouse match  
MANTOVA shirt & CAMPANIA blouse.  
See pages 64 and 65 for more information.



**BROOK TAVERNER**  
corporate tailoring

[www.brooktaverner.com](http://www.brooktaverner.com)