



vortex
designs for you

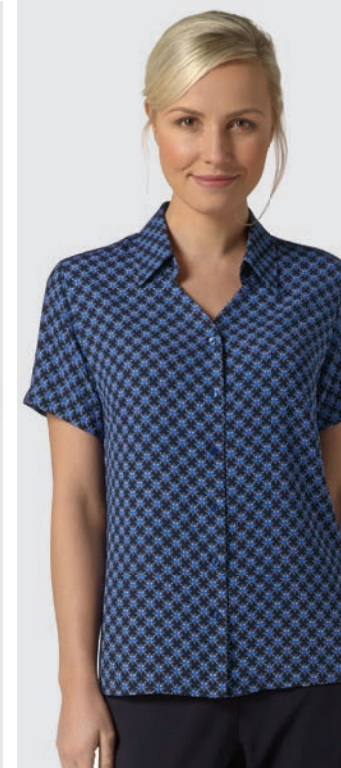
uniform
collection

uniform collection

Enhance and distinguish your image with Vortex's range of fashionable corporatewear uniforms.

Colours and designs have been co-ordinated so that any number of styles can be combined to give a distinctive, uniformed look.

vortexdesigns
AVAILABLE FROM STOCK
SAME DAY DESPATCH
vortexdesigns



size guide

xs	(6)
s	(8/10)
m	(12/14)
l	(16/18)
xl	(20/22)
xxl	(24/26)

knitwear

kristin	4
rachel	5
gemma	6
jessica	7
talia	8

undersuit tops

daisy	9
lexie	10-11

plain blouses

ruby	12
annabel	13
lillie	14
freya	15
yasmin	16
zoe	17
katy	18-19
mia	20
joanna	21

print blouses

eloise	22
willow	23
pipa	24
heidi	25
olivia	26
sarah	27
emma	28-29
sofia	30
chloe	30
beth	31
ingrid	32
amelie	33

stripe blouses

louise	34
annika	35



kristin v-neck cardigan with rib detail

62% nexio viscose, 36% polyamide, 2% elastane
sizes xs - xxl (size guide page 2)



rachel jacket style cardigan with rib detail

62% nexio viscose, 36% polyamide, 2% elastane
sizes xs - xxl (size guide page 2)



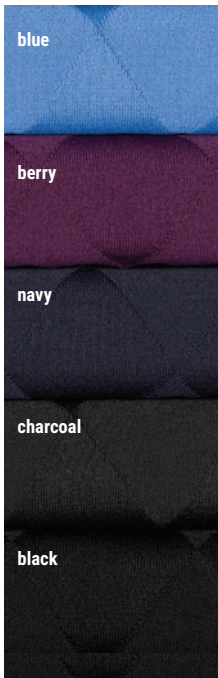
gemma knitted round neck top with white trim

62% nexio viscose, 36% polyamide, 2% elastane
colours navy, charcoal
sizes xs - xxl (size guide page 2)



jessica knitted crepe v-neck cardigan with white trim

62% nexio viscose, 36% polyamide, 2% elastane
sizes xs - xxl (size guide page 2)



talia knitted sleeveless v-neck jumper

62% nexio viscose, 36% polyamide, 2% elastane
sizes xs - xxl (size guide page 2)



daisy soft touch stretch jersey with added detail

95% viscose, 5% elastane
sizes xs - xxl (size guide page 2)





lexie soft touch stretch jersey with round neck and contrast trim

95% viscose, 5% elastane
colours black, white, navy
sizes xs - xxl (size guide page 2)



navy



berry

ruby shirt style cotton touch stretch blouse

97% polyester, 3% elastane
colours navy, berry
sizes 6-26



white

sky blue

lilac

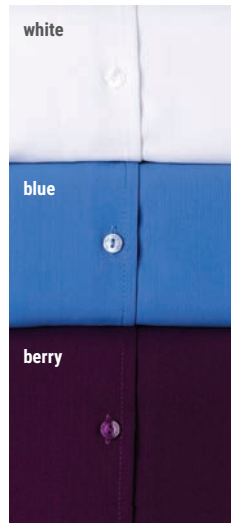
annabel cotton touch stretch blouse with side panel detail

97% polyester, 3% elastane
sizes 6-26



lillie v-neck stretch blouse

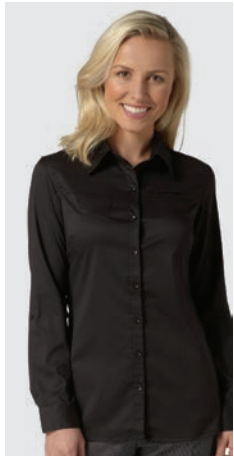
97% polyester, 3% elastane
sizes 6-26



freya double-button cotton touch stretch blouse

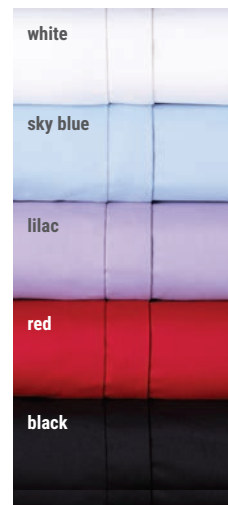
97% polyester, 3% elastane
sizes 6-26





yasmin roll sleeve cotton touch stretch blouse

97% polyester, 3% elastane
colour black
sizes 6-26



zoe cotton touch stretch blouse with concealed front

97% polyester, 3% elastane
sizes 6-26



katy cotton touch stretch blouse with rounded collar

97% polyester, 3% elastane
colours lilac, sky blue, white
sizes 6-26



mia cotton touch stretch blouse with mandarin collar

97% polyester, 3% elastane
colours white, black
sizes 6-26



joanna cotton touch stretch top with side zip fastening

97% polyester, 3% elastane
colours white, black
sizes 6-26



eloise printed soft touch crepe blouse

100% polyester.
colours navy, sky blue
sizes 6-26



willow printed soft touch crepe blouse

100% polyester.
colours berry, jade
sizes 6-26



pipa printed soft touch crepe blouse

100% polyester.
colours navy, white
sizes 6-26



heidi printed soft touch crepe blouse

100% polyester
colours navy, white
sizes 6-26



olivia printed soft touch crepe blouse with button cuff

100% polyester.
colours navy, pink
sizes 6-26

sarah printed soft touch crepe blouse

100% polyester
colours red, navy
sizes 6-26



emma printed soft touch crepe blouse

100% polyester
colours berry, sky blue, navy.
sizes 6-26



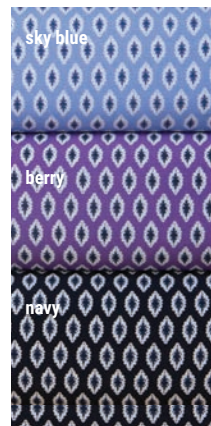
sofia printed soft touch crepe blouse

100% polyester
colours blue, lilac, navy
sizes 6-26



chloe printed soft touch crepe blouse

sizes 6-26



beth printed soft touch crepe pop-over top

100% polyester
colours sky blue, berry, navy
sizes 6-26



ingrid printed soft touch crepe blouse

100% polyester
colours red, navy
sizes 6-26



amelie printed soft touch crepe blouse with button cuff detail

100% polyester
colours berry, blue
sizes 6-26



louise cotton touch stretch blouse with button cuff

88% polyester, 10% cotton, 2% elastane.
colours blue, berry
sizes 6-26



annika cotton touch stretch blouse with bias cut side panels

88% polyester, 10% cotton, 2% elastane.
colours blue, berry
sizes 6-26



vortex
designs for you