



EUROPE'S FINEST COLLECTION OF BUSINESS WEAR FOR WORK



reuniform



# CLUBCLASS CORPORATE CLOTHING

A COLLECTION OF TAILORED CLOTHING DESIGNED FOR WORK

If you are in the market for tailored clothing for work you will come across all kinds of claims and boasts in other brochures and on websites. At Clubclass we only make promises we can stand by; no smoke and mirrors just high quality corporate tailoring, simple.

Clubclass is part of the Stuncroft group. Stuncroft manufacture tailored clothing for many of the high Streets favourite brands. We have a 40 year track record in supplying tailored clothing and currently manufacture over 2.5 million tailored garments every year.

We are the only Tailored Corporate Wear supplier in the U.K. that owns a factory and employs full time garment technicians, people with real experience, living and working on site where we make the clothing.

## So what do Clubclass do?

We have a brilliant design team and their brief is simple: find the best fabrics and components from around the world and design great tailored garments for working professionals; with an emphasis on:

- **A great fit**
- **Wonderful styling**
- **The worlds best level of performance; day in, day out, time after time**
- **Unbeatable value. No one can sell this quality for less**
- **Ethically sound in every area of the process**
- **A higher grade of trim than you would normally get on Corporate Clothing**
- **Ultra high performance fabric with great drape and feel**

**EVERYDAY 1,000'S OF PROFESSIONALS  
GET DRESSED FOR WORK IN CLUBCLASS CORPORATE CLOTHING.**



# WHAT IS IN THIS BROCHURE

## AND WHERE CAN YOU FIND IT?

This brochure showcases six collections of tailored clothing for the workplace; five of these are available from stock.

**No minimums and 96% delivered next day.**

Each collection can be found by simply turning to the pages that feature the collection you are interested in (see over page for index). To make this even easier we have tabbed each collection.

On the first page of each collection you will find key facts and brief technical details to help you decide if this is a collection that would work for your team.

The pages that follow the introduction show some of the garments in a lifestyle situation. The final pages of each collection have a simple overview of all the garments available in that collection with size, colour and fit details (this is the easiest part of the brochure to use for garment selection).

**All these collections are washable and are simply made to perform at work.**

### **The Individual Collection (available for special order only)**

On Pages 75-80 we showcase some of the garments we have made for teams that require their own look. This is called the individual collection and is available only by special order. Please ask your professional Corporate Wear supplier for details.

**INVEST IN THE BEST CORPORATE  
TAILORING AVAILABLE TODAY:  
CHOOSE CLUBCLASS CORPORATE  
TAILORING FOR YOUR TEAM.**





## EVERYONE

The Everyone Collection is probably Europe's most popular collection of Corporate Clothing. Practical, stylish and outstanding value. Made from a versatile Poly/Visc/Lycra fabric the EVERYONE collection will suit almost any business environment from security to fine hotel and all office environments.

1



## EVOLUTION

The Evolution Collection is tailored from a mid weight Poly/Wool/Lycra fabric. Used in our collections for more than 10 years this is a truly tried and tested collection of Corporate Clothing. Some of Europe's largest companies wear a suit from the Evolution Collection. From front of desk at London's best hotels to a number of high profile transport companies. All enjoy the comfort and high level of performance that Evolution gives.

21



## ENDURANCE

The Endurance Collection is "Simply Made To Perform At Work". Too many Corporate Clothing providers believe merely adding the word performance to their label makes for a viable performance tailored clothing solution. At Clubclass when we use the word performance we mean it. The Endurance Collection is the best performing collection of business tailored clothing you can buy.

37



**CLUBCLASS**  
CORPORATE CLOTHING



**EUROPA**

The Europa Collection is a sophisticated, lightweight collection of tailored garments ideal for those who want luxury and are prepared to pay just a little more to get it. Tailored from a fabulous Bi-Stretch fabric for comfort and wonderful crease recovery. Europa is Ideal for leisure resorts, fine hotels, fine restaurants, finance sector, general office and administrative environments.



**EVENTS**

A collection of black trousers, waistcoats and skirts ideal for the demanding environments of hospitality, facilities management and many service sectors. Tailored from a natural stretch Polyester fabric that is designed to look good day in, day out. Wash after wash. Currently worn by 1,000's of satisfied wearers.



**INDIVIDUAL**

On Pages 75-80 we showcase some of the garments we have made for teams that require their own look. This is called the individual collection and is available only by special order. Please ask your professional Corporate Wear supplier for details.

51

67

75





# A COLLECTION FOR EVERYONE

## THE EVERYONE COLLECTION IS PROBABLY EUROPE'S MOST POPULAR COLLECTION OF CORPORATE CLOTHING.

Made from a versatile Poly/Visc/Lycra fabric  
The EVERYONE collection will suit almost any business environment from Security to fine hotel and all office environments.

- A durable, midweight collection of mix and match tailored suiting for professionals who require modern clothing that works.
- Made from a fine Stretch Poly/Viscose/Lycra fabric that performs at work.
- A 14 piece collection to suit all wearers.
- Choose from 2 women's jackets, 2 trousers, skirt, 4 button waistcoat and dress. Men's 2 button jacket, trouser and 5 button waistcoat.
- Available in 3 colours - Charcoal, Black and Navy.
- Also available in a fashionable slim fit option. Women's jacket and slim trouser - Men's jacket and slim trouser.

## TECHNICAL SPECIFICATION



**Fabric: 64% Polyester / 34% Viscose / 2% Lycra weft stretch**  
(Durable with great drape and stretch for comfort and crease recovery).

**Weight: 315 grams per linear metre**  
(Mid-weight & machine washable).

**Durable: 145,000+ rubs** without any yarn breakage. Independent UK product testing (Martindale test). Grade 4/5 pilling. (Will perform and look good after days and months of wear in the right environment).

**Aftercare: Machine Washable or Dry Clean**  
(Convenient & cost effective).

**Proven fabric: 1000's of wearers with no complaints.**  
(Peace of mind; you are buying clothing with a great track record from a company with experience).

**Fabric meets Oeko-Tex Standard 100**





**FINCHLEY JACKET**

A contemporary jacket with a fashionable peaked lapel. Mid length with a centre vent. Ideal for women who want a stylish jacket at work.

- Single Breasted Jacket Peak Lapel
- 2 Button Fastening
- Centre Vent
- Feature Lining
- Machine Washable

**MAIDVALE TROUSER**

Modern, narrow parallel leg with a plain front. The fit is the key to this very successful trouser. Practical and up to date.

- Front Fastening
- Slim Leg
- Curved Comfort Style Pockets
- Key Loop
- 2 Feature Hip Pockets
- Low Waist with Deep Waistband
- Machine Washable

**MEN'S FARRINGDON JACKET & HARROW TROUSER**



### **BLOOMSBURY JACKET**

A classic style that flatters most shapes. Four seams on the back to ensure a great fit for all sizes.

- Single Breasted Jacket
- 2 Button Fastening
- Tulip Lapel
- 4 Panel Back Detail
- Feature Lining
- Machine Washable

**PRIMROSE DRESS**

Bust, shoulder and hip darts for great fit.

- Fully Lined
- Rear Vent
- Machine Washable



“  
A versatile  
stylish  
collection  
that would  
suit most  
workplaces.  
”





#### **POPLAR WAISTCOAT**

Great fit, very flattering with a fabric back.  
Looks good with or without your jacket on.

- 4 Button Fastening
- Fabric Back Waistcoat
- Feature Lining
- Machine Washable

#### **HOLBORN SKIRT**

Classic straight skirt for a change from trousers. Again all about the fit and the flattering false waistband seam that enhances the wearers shape.

- Pencil Skirt
- Front Seam Detail
- Rear Centre Back Vent
- Key Loop
- Machine Washable





#### **MAIDAVALE TROUSER**

Modern, narrow parallel leg with a plain front. The fit is the key to this very successful trouser. Practical and up to date.

- Front Fastening
- Slim Leg
- Curved Comfort Style Pockets
- Key Loop
- 2 Feature Hip Pockets
- Low Waist with Deep Waistband
- Machine Washable





#### **FINSBURY TROUSER**

For those who like a wider and flattering leg. The fit is great and the style suits most women.

- Front Fastening
- Parallel Leg
- Key Loop
- Cash Pocket
- Machine Washable



#### **WHITECHAPEL TROUSER**

Skinny fit just like you get on the high street, but they perform at work!

- Front Fastening
- Slim Leg
- Low Rise
- Key Loop
- 2 Feature Hip Pockets
- Curved Comfort Style Pockets
- Machine Washable





#### **FARRINGTON JACKET**

Two button contemporary jacket.  
A style to suit all wearers. Tailored fit  
with just enough shape to flatter a man.

- Single Breasted Jacket
- 2 Button Fastening
- Side Vents Feature Lining
- Machine Washable



#### **BOROUGH WAISTCOAT**

A smart great fitting waistcoat that looks great with or without your jacket on.

- 5 Button Fastening
- Fabric Back
- Feature Lining
- Machine Washable

#### **HARROW TROUSER**

A perfect plain front modern trouser for most wearers.

- Plain Front, French Bearer
- Belt Loops
- 2 Hip Pocket
- 1/2 Lined
- Machine Washable





**HOXTON JACKET**

For those wearers who want a fashionable, close fitting style. A peak lapel and slightly shorter length along with a smaller profile; just like fashion on the high street but made to perform at work.

- Women's Single Breasted Skinny Fit Jacket
- 1 Button Fastening
- Peaked Lapel Jacket
- Centre Back Vent
- Feature Lining
- Machine Washable

**WHITECHAPEL TROUSER**

Slim fit just like you get on the high street, but they perform at work!

- Women's Front Fastening Skinny Leg Trousers
- Low Rise
- Key Loop
- 2 Feature Hip Pockets
- Curved Comfort Style Pockets
- Machine Washable



# SKINNY **FIT**

Our skinny fit garments look excellent with the rest of The Everyone Collection





#### **ALDGATE JACKET**

A jacket that fits about one size smaller than standard with narrower sleeves. Just like a high street fashion jacket but this one will perform at work.

- Single Breasted Skinny Fit Jacket
- 2 Button Fastening
- Centre Back Vent
- Feature Lining
- Machine Washable

#### **EDGWARE TROUSER**

Slim fit just like on the high street but made to perform for work.

- Plain Front Skinny Fit Trousers
- French Bearer
- Belt Loops
- 2 Hip Pockets
- 1/2 Lined
- Machine Washable

## SKINNY **FIT**

Our skinny fit garments look excellent with the rest of The Everyone Collection



A COLLECTION FOR

# EVERYONE



## COLLECTION OVERVIEW

These 4 pages simply show you what styles are available in The Collection for EVERYONE. The photographs and detail will help you decide which style is right for you. If you need further help please phone your professional supplier who will offer guidance on how to select the right clothes for your work place.

### AS A GUIDE

Extra Petite / Petite: Women under 5'2" tall

Short: Men under 5' 6" tall

Regular: Women between 5'3" and 5'9" tall

Regular: Men between 5'7" and 6'1" tall

Long: Women over 5'10" tall

Long: Men over 6'1" tall



### POPLAR WAISTCOAT

- 4 Button Fastening
- Fabric Back Waistcoat
- Machine Washable
- Feature Lining

#### Sizes:

4 to 24 Regular

#### EU Sizes:

32 to 52 Regular

**Codes & Colours:** V2007C Charcoal, V2007B Black, V2007N Navy



### PRIMROSE DRESS

- Bust, Shoulder and Hip Darts
- Fully Lined
- Rear Vent
- Feature Lining
- Machine Washable

#### Sizes:

4 to 24 Regular

#### EU Sizes:

32 to 52 Regular

**Codes & Colours:** D2008C Charcoal, D2008B Black, D2008N Navy



### HOLBORN SKIRT

- Pencil Skirt
- Front Seam Detail
- Rear Centre Back Vent
- Key Loop
- Machine Washable

#### Sizes:

4 to 24 Regular (23" length)  
4 to 24 Long (25" length)

#### EU Sizes:

32 to 52 Regular (58cm length)  
32 to 52 Long (64cm length)

**Codes & Colours:** S2006C Charcoal, S2006B Black, S2006N Navy



**FINCHLEY JACKET**

- Single Breasted
- Peak Lapel
- 2 Button Fastening
- Centre Back Vent
- Feature Lining
- Machine Washable

**Sizes:**

4 to 24 Regular  
6 to 18 Petite  
6 to 24 Long

**EU Sizes:**

32 to 52 Regular  
34 to 46 Petite  
34 to 52 Long

**Codes & Colours:** J2001C Charcoal, J2001B Black, J2001N Navy

**BLOOMSBURY JACKET**

- Single Breasted Jacket
- 2 Button Fastening
- Tulip Lapel
- 4 Panel Back Detail
- Feature Lining
- Machine Washable

**Sizes:**

4 to 24 Regular  
6 to 18 Petite  
6 to 24 Long

**EU Sizes:**

32 to 52 Regular  
34 to 46 Petite  
34 to 52 Long

**Codes & Colours:** J2000C Charcoal, J2000B Black, J2000N Navy

**MAIDVALE TROUSER**

- Front Fastening
- Slim Leg
- Key Loop
- 2 Feature Hip Pockets
- Low Waist with Deep Waistband
- Curved Comfort Style Pockets
- Machine Washable

**Sizes:**

4 to 24 Extra Petite (27" IL)  
4 to 24 Petite (29" IL)  
4 to 24 Regular (31" IL)  
4 to 24 Long (34" IL)  
4 to 24 Un/Finished (37" IL)

**EU Sizes:**

32 to 52 Extra Petite (69cm IL)  
32 to 52 Petite (74cm IL)  
32 to 52 Regular (79cm IL)  
32 to 52 Long (86cm IL)  
32 to 52 Un/Finished (94cm IL)

**Codes & Colours:** T2004C Charcoal, T2004B Black, T2004N Navy

Also available in sizes 11 & 13 (EU 39 & 41) in all lengths

**FINSBURY TROUSER**

- Front Fastening
- Parallel Leg
- Key Loop
- Cash Pocket
- Machine Washable

**Sizes:**

4 to 24 Petite (29" IL)  
4 to 24 Regular (31" IL)  
4 to 24 Long (34" IL)  
4 to 24 Un/Finished (37" IL)

**EU Sizes:**

32 to 52 Petite (74cm IL)  
32 to 52 Regular (79cm IL)  
32 to 52 Long (86cm IL)  
32 to 52 Un/Finished (94cm IL)

**Codes & Colours:** T2003C Charcoal, T2003B Black, T2003N Navy

Also available in sizes 11 & 13 (EU 39 & 41) in all lengths

# MEN'S



## FARRINGDON JACKET

- Single Breasted Jacket
- Tailored Fit
- 2 Button Fastening
- Side Vents Feature Lining
- Machine Washable

### Sizes:

34 to 54 Regular  
36 to 50 Short  
36 to 50 Long

### EU Sizes:

44 to 64 Regular  
46 to 60 Short  
46 to 60 Long

### Codes & Colours:

J1000C Charcoal,  
J1000B Black,  
J1000N Navy



## HARROW TROUSER

- Plain Front, French Bearer
- Belt Loops
- 2 Hip Pocket

### Sizes:

28 to 50 Short (29" IL)  
28 to 50 Regular (31" IL)  
28 to 50 Long (33" IL)  
28 to 50 Un/Finished (37" IL)

- 1/2 Lined
- Machine Washable

### EU Sizes:

44 to 66 Short (74cm IL)  
44 to 66 Regular (79cm IL)  
44 to 66 Long (84cm IL)  
44 to 66 Un/Finished (94cm IL)

**Codes & Colours:** T1002C Charcoal, T1002B Black, T1002N Navy



## BOROUGH WAISTCOAT

- 5 Button Fastening
- Fabric Back

### Sizes:

34 to 54 Regular

- Feature Lining
- Machine Washable

### EU Sizes:

44 to 64 Regular

**Codes & Colours:** W1004C Charcoal, W1004B Black, W1004N Navy

# SKINNY FIT



## HOXTON JACKET

- Skinny Fit
- 1 Button Fastening
- Peaked Lapel Jacket

- Centre Back Vent
- Feature Lining
- Machine Washable

### Sizes:

- 4 to 16 Regular
- 6 to 16 Petite
- 6 to 16 Long

### EU Sizes:

- 32 to 44 Regular
- 34 to 44 Petite
- 34 to 44 Long

**Codes & Colours:** J2002C Charcoal, J2002B Black, J2002N Navy



## WHITECHAPEL TROUSER

- Skinny Fit
- Front Fastening
- Low Rise

- Key Loop
- 2 Feature Hip Pockets
- Curved Comfort Style Pockets

### Sizes:

- 4 to 16 Extra Petite (27" IL)
- 4 to 16 Petite (29" IL)
- 4 to 16 Regular (31" IL)
- 4 to 16 Long (34" IL)
- 4 to 16 Un/Finished (37" IL)

### EU Sizes:

- 32 to 44 Extra Petite (69cm IL)
- 32 to 44 Petite (74cm IL)
- 32 to 44 Regular (79cm IL)
- 32 to 44 Long (86cm IL)
- 32 to 44 Un/Finished (94cm IL)

**Codes & Colours:** T2005C Charcoal, T2005B Black, T2005N Navy



## ALDGATE JACKET

- Single Breasted Skinny Fit
- 2 Button Fastening
- Centre Back Vent

- Feature Lining
- Machine Washable

### Sizes:

- 34 to 44 Regular
- 36 to 44 Short
- 36 to 44 Long

### EU Sizes:

- 44 to 54 Regular
- 46 to 54 Short
- 46 to 54 Long

**Codes & Colours:** J1001C Charcoal, J1001B Black, J1001N Navy



## EDGWARE TROUSER

- Plain Front Skinny Fit Trousers
- French Bearer
- Belt Loops

- 2 Hip Pocket
- 1/2 Lined
- Machine Washable

### Sizes:

- 28 to 38 Short (29" IL)
- 28 to 38 Regular (31" IL)
- 28 to 38 Long (33" IL)
- 28 to 38 Un/Finished (37" IL)

### EU Sizes:

- 44 to 54 Short (74cm IL)
- 44 to 54 Regular (79cm IL)
- 44 to 54 Long (84cm IL)
- 44 to 54 Un/Finished (94cm IL)

**Codes & Colours:** T1003C Charcoal, T1003B Black, T1003N Navy



# evolution

## THE EVOLUTION COLLECTION IS TAILORED FROM A FABRIC THAT IS CURRENTLY BEING WORN BY 1,000'S OF SATISFIED WEARERS.

Used in our collections for more than 10 years this is a truly tried and tested, mid weight Poly/Wool/Lycra.

Some of Europe's largest companies wear a suit from the Evolution Collection. From front of desk at London's best hotels to a number of high profile transport companies. All enjoy the comfort and high level of performance that Evolution gives.

- Formally called the wash and wear collection, Evolution is a sophisticated, mid-weight, tailored collection of professional clothing.
- A 16 piece collection with fashion and classic pieces to suit all wearers.
- If you want stylish, well made clothing for work then you can trust the Evolution corporate tailoring collection from Clubclass.

## TECHNICAL SPECIFICATION



**Fabric: 64% Polyester / 34% Wool / 2% Lycra weft stretch**  
(Wool & Lycra give shape retention and the polyester is durable).

**Weight: 315 grams per linear metre**  
(Mid-weight & machine washable).

**Durable: 50,000+ on a Martindale test. Grade 4/5 pilling**  
(Will look good after days and months of wear).

**Aftercare: Machine Washable or Dry Clean**  
(Convenient & cost effective).

**Proven fabric: 1000's of wearers with no complaints**  
(Peace of mind; you are buying clothing with a great track record from a company with experience).

**Fabric meets Oeko-Tex Standard 100**





ISLINGTON JACKET



#### **ISLINGTON JACKET**

A classic style that flatters most shapes. Four seams on back to ensure a great fit for all sizes.

- Single Breasted Jacket
- 2 Button Fastening
- Tulip Lapel
- 4 Panel Back Detail
- Feature Lining
- Machine Washable

#### **REGENT TROUSER**

A classic parallel leg trouser offering a great fit that flatters & fits most sizes.

- Front Fastening
- Parallel Leg
- Cash Pocket
- 1/2 Lined
- Machine Washable

#### **STRAND WAISTCOAT**

Great fit & shape very flattering with fabric back, looks good with or without your jacket.

- 4 Button Fastening
- Fabric Back
- Feature Lining
- Machine Washable





**BELGRAVIA JACKET**

A classic three button jacket with added seam details to enhance a fitted look.

- Single Breasted Jacket
- 3 Button Fastening
- Tulip Lapel
- 4 Panel Back Detail
- Feature Lining
- Machine Washable





#### **ANGEL SKIRT**

Classic straight skirt for a change from trousers. Again all about the fit and the flattering false waistband seam that enhances the wearers shape.

- Pencil Skirt
- Front Seam Detail
- Rear Centre Vent
- Machine Washable

#### **SLOANE DRESS**

Bust, shoulder and hip darts for great fit. A great alternative to trousers, looks good with or without jackets.

- Fully Lined
- Rear Vent
- Machine Washable





**VICTORIA JACKET**

Ladies commercial classic three button jacket designed to flatter most shapes.

- Single Breasted Jacket
- 3 Button Fastening
- Feature Lining
- Machine Washable



#### **KENSINGTON TROUSER**

Modern, narrow parallel leg with a plain front. The fit is the key to this very successful trouser. Practical and up to date.

- Front Fastening
- Slim Leg
- 2 Feature Hip Pockets
- Low Waist with Deep Waistband
- Curved Comfort Style Pockets
- 1/2 Lined
- Machine Washable



#### **REGENT TROUSER**

A classic parallel leg trouser offering a great fit that flatters & fits most sizes.

- Front Fastening
- Parallel Leg
- Cash Pocket
- 1/2 Lined
- Machine Washable



#### **MAYFAIR TROUSER**

For Ladies who prefer a more flattering and wider leg shape.

- Front Fastening
- Flared Leg
- Belt Loops
- Cash Pocket
- 2 Feature Hip Pockets
- 1/2 Lined
- Low Waist
- Machine Washable





ISLINGTON & LIMEHOUSE JACKET

### **LIMEHOUSE JACKET**

Two button contemporary jacket.  
A style to suit all wearers. Tailored Fit  
with just enough shape to flatter a man.

- Single Breasted Jacket
- 2 Button
- Side Vents
- Machine Washable

### **SOHO TROUSER**

A perfect plain front modern  
trouser for most wearers.

- Plain Front
- French Bearer
- 2 Hip Pockets
- 1/2 Lined
- Machine Washable





“

**Many of  
Europe's  
finest  
companies  
wear a suit  
from the  
evolution  
collection**

”

**WHITEHALL JACKET**

Classic three button jacket, a classic cut & style designed to suit all wearers.

- Single Breasted Jacket
- Centre Vent
- Feature Lining
- 3 Button
- Machine Washable

**BOND WAISTCOAT**

A smart great fitting waistcoat that looks great with or without your jacket on.

- 5 Button Fastening
- Fabric Back
- Feature Lining
- Machine Washable

**WESTMINSTER TROUSER**

A perfect single pleat classic trouser for most wearers.

- Single Pleat Trousers
- French Bearer
- 2 Hip Pockets
- 1/2 Lined
- Machine Washable



#### **SOHO TROUSER**

A perfect plain front modern trouser for most wearers.

- Plain Front
- 2 Hip Pockets
- French Bearer
- 1/2 Lined
- Machine Washable



#### **WESTMINSTER TROUSER**

A classic fit, single pleat trouser designed to suit all wearers.

- Single Pleat Trousers
- French Bearer
- 2 Hip Pockets
- 1/2 Lined
- Machine Washable



# EVOLUTION

## COLLECTION OVERVIEW

The Evolution Collection is tailored from a mid weight Poly/Wool/Lycra fabric. Used in our collections for more than 10 years this is a truly tried and tested collection of Corporate Clothing.

We already have the perfect fabric for Corporate tailoring: the existing Wash & Wear fabric has sold wonderfully, and with virtually no complaints, for the last 5 years. The choice to continue to use this durable, comfortable, trouble free, brilliant fabric was easy.

### AS A GUIDE

Extra Petite / Petite: Women under 5'2" tall

Short: Men under 5' 6" tall

Regular: Women between 5'3" and 5'9" tall

Regular: Men between 5'7" and 6'1" tall

Long: Women over 5'10" tall

Long: Men over 6'1" tall



### VICTORIA JACKET

- Single Breasted
- 3 Button Fastening

- Feature Lining
- Machine Washable

#### Sizes:

- 6 to 24 Regular
- 6 to 16 Petite
- 8 to 24 Long

#### EU Sizes:

- 34 to 52 Regular
- 34 to 44 Petite
- 36 to 52 Long

**Codes & Colours:** J3002C Charcoal, J3002N Navy, J3002S Navy Stripe\*, J3002B Black



### SAVOY JACKET

- Single Breasted Tail Coat
- 3 Button Fastening

- Feature Lining
- Machine Washable

#### Sizes:

- 6 to 18 Regular

#### EU Sizes:

- 34 to 46 Regular

**Codes & Colours:** J3003B Black



### KENSINGTON TROUSER

- Front Fastening
- Slim Leg
- 1/2 Lined
- 2 Feature Hip Pockets

- Low Waist with Deep Waistband
- Curved Comfort Style Pockets
- Machine Washable

#### Sizes:

- 6 to 24 Extra Petite (27" IL)
- 6 to 24 Petite (29" IL)
- 6 to 24 Regular (31" IL)
- 6 to 24 Long (34" IL)
- 6 to 24 Un/Finished (37" IL)

#### EU Sizes:

- 34 to 52 Extra Petite (69cm IL)
- 34 to 52 Petite (74cm IL)
- 34 to 52 Regular (79cm IL)
- 34 to 52 Long (86cm IL)
- 34 to 52 Un/Finished (94cm IL)

**Codes & Colours:** T3008C Charcoal, T3008N Navy, T3008S Navy Stripe\*, T3008B Black

\* Navy Pinstripe limited stock due to phasing out

Also available in sizes 11 & 13 (EU 39 & 41) in all lengths





**ISLINGTON JACKET**

- Single Breasted
- 2 Button Fastening
- Tulip Lapel
- 4 Panel Back Detail
- Feature Lining
- Machine Washable

**Sizes:**  
 6 to 24 Regular  
 6 to 16 Petite  
 8 to 24 Long

**EU Sizes:**  
 34 to 52 Regular  
 34 to 44 Petite  
 36 to 52 Long

**Codes & Colours:** J3000C Charcoal, J3000N Navy, J3000S Navy Stripe\*, J3000B Black



**BELGRAVIA JACKET**

- Single Breasted
- 3 Button Fastening
- Tulip Lapel
- 4 Panel Back Detail
- Feature Lining
- Machine Washable

**Sizes:**  
 6 to 24 Regular  
 6 to 16 Petite  
 8 to 24 Long

**EU Sizes:**  
 34 to 52 Regular  
 34 to 44 Petite  
 36 to 52 Long

**Codes & Colours:** J3001C Charcoal, J3001N Navy, J3001S Navy Stripe\*, J3001B Black



**REGENT TROUSER**

- Front Fastening
- Parallel Leg
- 1/2 Lined
- Cash Pocket
- Machine Washable

**Sizes:**  
 6 to 24 Petite (29" IL)  
 6 to 24 Regular (31" IL)  
 6 to 24 Long (34" IL)  
 6 to 24 Un/Finished (37" IL)

**EU Sizes:**  
 34 to 52 Petite (74cm IL)  
 34 to 52 Regular (79cm IL)  
 34 to 52 Long (86cm IL)  
 34 to 52 Un/Finished (94cm IL)

**Codes & Colours:** T3007C Charcoal, T3007N Navy, T3007S Navy Stripe\*, T3007B Black

Also available in sizes 11 & 13 (EU 39 & 41) in all lengths



**MAYFAIR TROUSER**

- Front Fastening
- Flared Leg
- Belt Loops
- Cash Pocket
- 2 Feature Hip Pockets
- 1/2 Lined
- Low Waist
- Machine Washable

**Sizes:**  
 6 to 24 Petite (29" IL)  
 6 to 24 Regular (31" IL)  
 6 to 24 Long (34" IL)  
 6 to 24 Un/Finished (37" IL)

**EU Sizes:**  
 34 to 52 Petite (74cm IL)  
 34 to 52 Regular (79cm IL)  
 34 to 52 Long (86cm IL)  
 34 to 52 Un/Finished (94cm IL)

**Codes & Colours:** T3006C Charcoal, T3006N Navy, T3006S Navy Stripe\*, T3006B Black

Also available in sizes 11 & 13 (EU 39 & 41) in all lengths



**STRAND WAISTCOAT**

- 4 Button Fastening
- Fabric Back
- Feature Lining
- Machine Washable

**Sizes:**  
6 to 24 Regular

**EU Sizes:**  
34 to 52 Regular

**Codes & Colours:** V3008C Charcoal, V3008N Navy, V3008B Black



**SLOANE DRESS**

- Bust, Shoulder and Hip Darts
- Rear Vent
- Fully Lined
- Machine Washable

**Sizes:**  
6 to 24 Regular

**EU Sizes:**  
34 to 52 Regular

**Codes & Colours:** D3009C Charcoal, D3009N Navy, D3009B Black



**ANGEL SKIRT**

- Pencil Skirt
- Front Seam Detail
- Rear Centre Vent
- Machine Washable

**Sizes:**  
6 to 24 Regular (23" length)  
6 to 24 Long (25" length)

**EU Sizes:**  
34 to 52 Regular (58cm length)  
34 to 52 Long (64cm length)

**Codes & Colours:** S3004C Charcoal, S3004N Navy, S3004S Navy Stripe\*, S3004B Black



**PIMLICO SKIRT**

- Longline Skirt
- Front and Rear Vent
- Machine Washable

**Sizes:**  
6 to 24 Regular (34" length)

**EU Sizes:**  
34 to 52 Regular (86cm length)

**Codes & Colours:** S3005C Charcoal, S3005N Navy, S3005S Navy Stripe\*, S3005B Black

\* Navy Pinstripe limited stock due to phasing out

# MEN'S



## WHITEHALL JACKET

- Single Breasted
- Feature Lining
- 3 Button
- Classic Fit
- Centre Vent
- Machine Washable

### Sizes:

36 to 54 Regular  
38 to 48 Short  
38 to 48 Long

### EU Sizes:

46 to 64 Regular  
48 to 58 Short  
48 to 58 Long

**Codes & Colours:** J6001C Charcoal, J6001N Navy, J6001S Navy Stripe\*, J6001B Black



## LIMEHOUSE JACKET

- Single Breasted
- Feature Lining
- 2 Button
- Tailored Fit
- Side Vents
- Machine Washable

### Sizes:

36 to 50 Regular  
38 to 48 Short  
38 to 48 Long

### EU Sizes:

46 to 60 Regular  
48 to 58 Short  
48 to 58 Long

**Codes & Colours:** J6000C Charcoal, J6000N Navy, J6000B Black



## SOHO TROUSER

- Plain Front
- 2 Hip Pockets
- French Bearer
- 1/2 Lined
- Machine Washable

### Sizes:

28 to 50 Short (29" IL)  
28 to 50 Regular (31" IL)  
28 to 50 Long (33" IL)  
28 to 50 Un/Finished (37" IL)

### EU Sizes:

44 to 66 Short (74cm IL)  
44 to 66 Regular (79cm IL)  
44 to 66 Long (84cm IL)  
44 to 66 Un/Finished (94cm IL)

### Codes & Colours:

T6002C Charcoal, T6002N Navy, T6002B Black



## WESTMINSTER TROUSER

- Single Pleat
- 2 Hip Pockets
- French Bearer
- 1/2 Lined
- Machine Washable

### Sizes:

28 to 50 Short (29" IL)  
28 to 50 Regular (31" IL)  
28 to 50 Long (33" IL)  
28 to 50 Un/Finished (37" IL)

### EU Sizes:

44 to 66 Short (74cm IL)  
44 to 66 Regular (79cm IL)  
44 to 66 Long (84cm IL)  
44 to 66 Un/Finished (94cm IL)

### Codes & Colours:

T6003C Charcoal, T6003N Navy, T6003S Navy Stripe\*, T6003B Black



## BOND WAISTCOAT

- 5 Button Fastening
- Fabric Back
- Feature Lining
- Machine Washable

### Sizes:

36 to 50 Regular

### EU Sizes:

46 to 60 Regular

### Codes & Colours:

W6004C Charcoal, W6004N Navy, W6004B Black



# ENDURANCE

## SIMPLY MADE TO PERFORM AT WORK.

Too many Corporate Clothing providers believe merely adding the word Performance to their label makes for a viable performance tailored clothing solution. At Clubclass when we use the word performance we mean it. The Endurance Collection is the best performing collection of business tailored clothing you can buy.

We started with the fabric; we wanted something that was both more durable than current tailoring yet also comfortable. We found it in a fabric made from high quality wool mixed with low-pill, high tech, Polyester.

We asked a brilliant garment technician to produce jacket patterns for men & women concentrating on fit and ease of movement and to produce trousers that fit but are great to work in.

We then used a higher grade of trim (Lining, Buttons, Internal canvas, chest piece and shoulder pads) than would normally be used in clothing at this price. We even made sure we put the internal pockets onto fabric inserts rather than directly onto the lining, because it is better and stronger and we believe it is attention to detail that sets the best apart.

## TECHNICAL SPECIFICATION



**Fabric: 70% Polyester / 30% Wool**

(Wool has natural elasticity for shape retention. Polyester is durable).

**Weight: 360 grams**

(Heavy duty & machine washable).

**Durable: 99,000+ Martindale test**

(Will stand up to hard wear hour after hour).

**Aftercare: Machine Washable, 40°**

(Convenient and cost effective).

**Proven: 1,000's of sales with no complaints**

(Peace of mind that you are buying proven garments).

**Fabric meets Oeko-Tex Standard 100**

**Simply Quality Tailoring stripped down to its most minimal form and rebuilt for function in a modern work place.**

**Hardwearing, comfortable, tough and honest:  
"The Endurance Tailoring Collection".**





### **BANKSIDE JACKET**

Ladies commercial classic three button jacket designed to flatter most shapes.

- Single Breasted Jacket
- 3 Button Fastening
- Feature Lining
- Machine Washable

### **ASTORIA SKIRT**

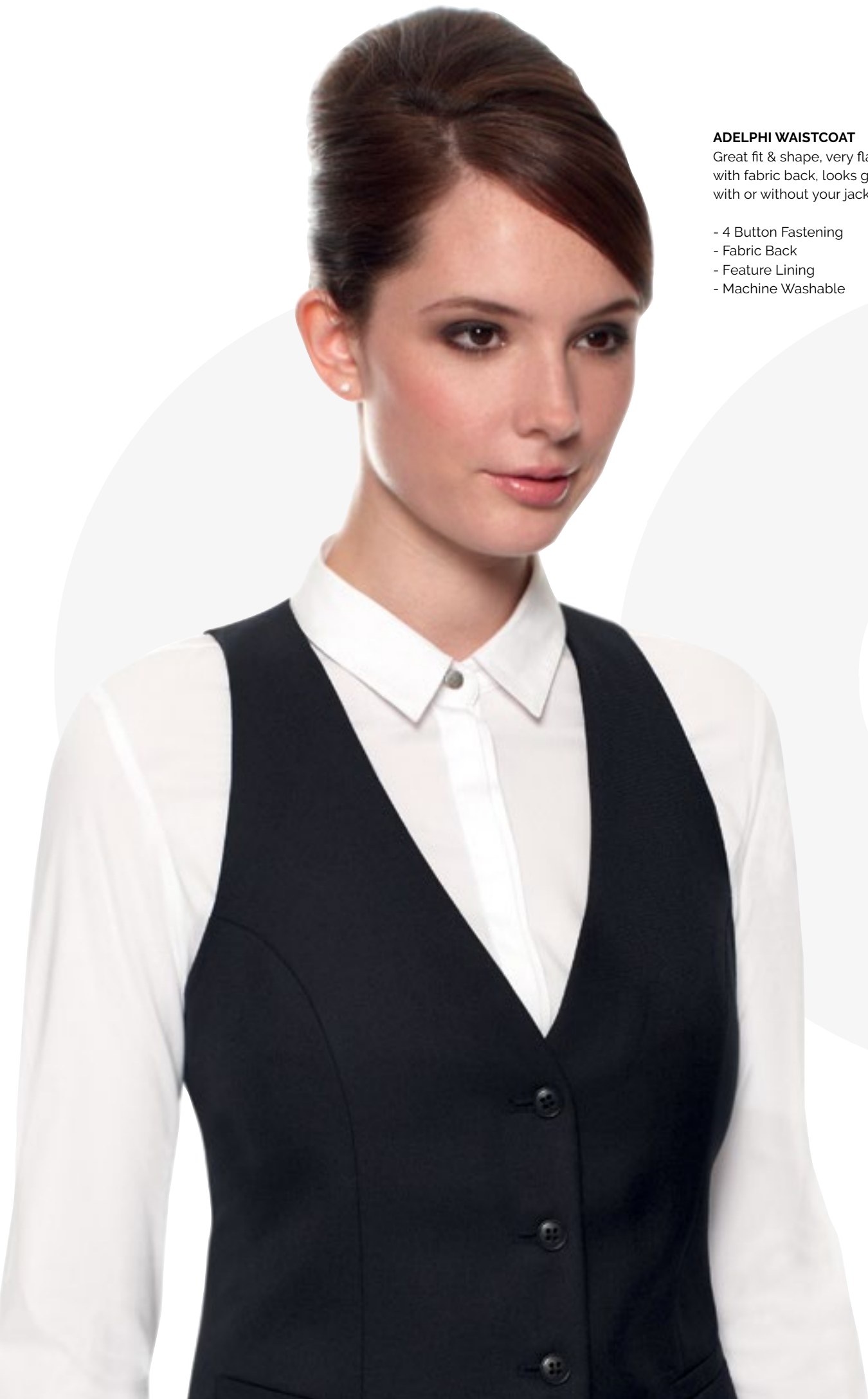
A classic pencil skirt, an alternative to a trouser option.

- Pencil Skirt with Feature  
Bungee Cord in Left Side Seam
- Rear Vent
- Machine Washable



“  
**Expertly  
tailored to  
perform  
at work**  
”





**ADELPHI WAISTCOAT**

Great fit & shape, very flattering with fabric back, looks good with or without your jacket.

- 4 Button Fastening
- Fabric Back
- Feature Lining
- Machine Washable





#### **CAMDEN TROUSER**

Modern, narrow parallel leg with a plain front. The fit is the key to this very successful trouser. Practical and up to date.

- Front Fastening
- Slim Leg
- Curved Comfort Style Pockets
- 2 Feature Hip Pockets
- Low Waist with Deep Waistband
- Machine Washable



#### **BROMPTON TROUSER**

For Ladies who prefer a more flattering and wider leg shape.

- Front Fastening
- Flared Leg
- Belt Loops
- Cash Pocket
- 2 Feature Hip Pockets
- Low Waist with Deep Waistband
- Machine Washable



#### **CHELSEA TROUSER**

A classic parallel leg trouser offering a great fit that flatters & fits most sizes.

- Front Fastening
- Parallel Leg
- Belt Loops
- Cash Pocket
- Machine Washable





DOCKLAND JACKET

**DOCKLAND JACKET**

Men's classic two button jacket designed to fit most sizes offering great fit & performance.

- Single Breasted Jacket
- 2 Button Fastening
- Side Vents
- Feature Lining
- Machine Washable

**STANFORD TROUSER**

A perfect plain front modern trouser for most wearers.

- Plain Front
- French Bearer
- Belt Loops
- Hip Pocket
- 1/2 Lined
- Machine Washable



#### **RITZ WAISTCOAT**

A smart great fitting waistcoat that looks great with or without your jacket on.

- 5 Button Fastening
- Fabric Back
- Feature Lining
- Machine Washable



#### **PRINCIPLE TROUSER - GREY FORMAL STRIPE**

A classic fit single pleat formal trouser designed to suit all wearers.

- Single Pleat
- French Bearer
- Belt Loops
- Hip Pocket
- 1/2 Lined
- Machine Washable





#### **STANFORD TROUSER**

A perfect plain front modern classic trouser for most wearers.

- Plain Front
- French Bearer
- Belt Loops
- Hip Pocket
- 1/2 Lined
- Machine Washable



#### **PRINCIPLE TROUSER**

A classic fit single pleat trouser designed to suit all wearers.

- Single Pleat
- French Bearer
- Belt Loops
- Hip Pocket
- 1/2 Lined
- Machine Washable



#### **LISBON TROUSER**

A classic fit single pleat trouser designed to suit all wearers.

- Single Pleat
- French Bearer
- Poly/Viscose
- 1 Hip Pocket
- Belt Loops
- Machine Washable



# ENDURANCE

## COLLECTION OVERVIEW

Too many Corporate Clothing providers believe merely adding the word Performance to their label makes for a viable performance tailored clothing solution. At Clubclass when we use the word Performance we mean it. The Endurance Collection is the best performing collection of business tailored clothing you can buy.

### AS A GUIDE

Extra Petite / Petite: Women under 5'2" tall

Short: Men under 5' 6" tall

Regular: Women between 5'3" and 5'9" tall

Regular: Men between 5'7" and 6'1" tall

Long: Women over 5'10" tall

Long: Men over 6'1" tall



### ADELPHI VEST

- 4 Button Fastening
- Fabric Back

- Feature Lining
- Machine Washable

#### Sizes:

6 to 24 Regular

#### EU Sizes:

34 to 52 Regular

**Codes & Colours:** E5V0489 Charcoal, E5V0459 Navy, E5V0499 Black



### CAMDEN TROUSER

- Front Fastening
- Slim Leg
- 2 Feature Hip Pockets

- Curved Comfort Style Pockets
- Machine Washable

#### Sizes:

6 to 24 Extra Petite (27" IL)  
6 to 24 Petite (29" IL)  
6 to 24 Regular (31" IL)  
6 to 24 Long (34" IL)  
6 to 24 Un/Finished (37" IL)

#### EU Sizes:

34 to 52 Extra Petite (69cm IL)  
34 to 52 Petite (74cm IL)  
34 to 52 Regular (79cm IL)  
34 to 52 Long (86cm IL)  
34 to 52 Un/Finished (94cm IL)

**Codes & Colours:** E6LT489 Charcoal, E6LT459 Navy, E6LT499 Black

Also available in sizes 11 & 13 (EU 39 & 41) in all lengths



### BROMPTON TROUSER

- Front Fastening
- Flared Leg
- Belt Loops
- Machine Washable

- Cash Pocket
- 2 Feature Hip Pockets
- Low Waist
- Deep Waistband

#### Sizes:

6 to 24 Petite (29" IL)  
6 to 24 Regular (31" IL)  
6 to 24 Long (34" IL)  
6 to 24 Un/Finished (37" IL)

#### EU Sizes:

34 to 52 Petite (74cm IL)  
34 to 52 Regular (79cm IL)  
34 to 52 Long (86cm IL)  
34 to 52 Un/Finished (94cm IL)

**Codes & Colours:** E5LT489 Charcoal, E5LT459 Navy, E5LT499 Black

Also available in sizes 11 & 13 (EU 39 & 41) in all lengths



**BANKSIDE JACKET**

- Single Breasted
- 3 Button Fastening
- Feature Lining
- Machine Washable

**Sizes:**

- 6 to 24 Regular
- 6 to 16 Petite
- 8 to 24 Long

**EU Sizes:**

- 34 to 52 Regular
- 34 to 44 Petite
- 36 to 52 Long

**Codes & Colours:**

- E5J1589 Charcoal,
- E5J1559 Navy,
- E5J1599 Black



**CHELSEA TROUSER**

- Front Fastening
- Parallel Leg
- Belt Loops
- Cash Pocket
- Feature Lining Waistband
- Machine Washable

**Sizes:**

- 6 to 24 Petite (29" IL)
- 6 to 24 Regular (31" IL)
- 6 to 24 Long (34" IL)
- 6 to 24 Un/Finished (37" IL)

**EU Sizes:**

- 34 to 52 Petite (74cm IL)
- 34 to 52 Regular (79cm IL)
- 34 to 52 Long (86cm IL)
- 34 to 52 Un/Finished (94cm IL)

**Codes & Colours:** E4LT489 Charcoal, E4LT459 Navy, E4LT499 Black

Also available in sizes 11 & 13 (EU 39 & 41) in all lengths



**ASTORIA SKIRT**

- Pencil Skirt
- Rear Vent
- Machine Washable
- Feature Bungee Cord in Left Side Seam

**Sizes:**

- 6 to 24 Regular (23" length)
- 6 to 24 Long (25" length)

**EU Sizes:**

- 34 to 52 Regular (58cm length)
- 34 to 52 Long (64cm length)

**Codes & Colours:** E5S1289 Charcoal, E5S1259 Navy, E5S1299 Black

# MEN'S



## DOCKLAND JACKET

- Single Breasted
- 2 Button Fastening
- Side Vents
- Feature Lining
- Machine Washable

### Sizes:

36 to 54 Regular  
38 to 50 Short  
36 to 50 Long

### EU Sizes:

46 to 64 Regular  
48 to 60 Short  
46 to 60 Long

### Codes & Colours:

E4JO489 Charcoal,  
E4JO459 Navy,  
E4JO499 Black



## STANFORD TROUSER

- Plain Front
- French Bearer
- Belt Loops
- Hip Pocket
- 1/2 Lined
- Machine Washable

### Sizes:

28 to 50 Short (29" IL)  
28 to 50 Regular (31" IL)  
28 to 50 Long (33" IL)  
28 to 50 Un/Finished (37" IL)

### EU Sizes:

44 to 66 Short (74cm IL)  
44 to 66 Regular (79cm IL)  
44 to 66 Long (84cm IL)  
44 to 66 Un/Finished (94cm IL)

**Codes & Colours:** E5T0589 Charcoal, E5T0559 Navy, E5T0599 Black



## PRINCIPLE TROUSER

- Single Pleat
- French Bearer
- Hip Pocket
- 1/2 Lined
- Belt Loops
- Machine Washable

### Sizes:

28 to 50 Short (29" IL)  
28 to 50 Regular (31" IL)  
28 to 50 Long (33" IL)  
28 to 50 Un/Finished (37" IL)

### EU Sizes:

44 to 66 Short (74cm IL)  
44 to 66 Regular (79cm IL)  
44 to 66 Long (84cm IL)  
44 to 66 Un/Finished (94cm IL)

**Codes & Colours:** E4T0489 Charcoal, E4T0459 Navy, E4T0499 Black





**RITZ WAISTCOAT**

- 5 Button Fastening
- Fabric Back
- Feature Lining
- Machine Washable

**Sizes:**

36 to 50 Regular

**EU Sizes:**

46 to 60 Regular

**Codes & Colours:**

E5W0489 Charcoal,  
E5W0459 Navy,  
E5W0499 Black



**PRINCIPLE TROUSER - GREY FORMAL STRIPE**

- Single Pleat
- French Bearer
- Hip Pocket
- 1/2 Lined
- Belt Loops
- Machine Washable

**Sizes:**

28 to 50 Short (29" IL)  
28 to 50 Regular (31" IL)  
28 to 50 Long (33" IL)  
28 to 50 Un/Finished (37" IL)

**EU Sizes:**

44 to 66 Short (74cm IL)  
44 to 66 Regular (79cm IL)  
44 to 66 Long (84cm IL)  
44 to 66 Un/Finished (94cm IL)

**Codes & Colours:** E4T0479 Grey formal stripe



**LISBON TROUSER**

- Poly Viscose Single Pleated
- French Bearer
- Hip Pocket
- Belt Loops
- Machine Washable

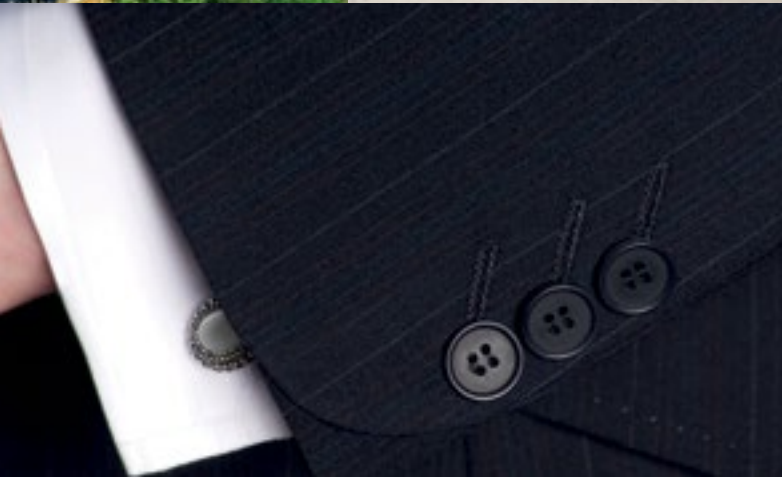
**Sizes:**

30 to 50 Short (29" IL)  
30 to 50 Regular (31" IL)  
30 to 50 Long (33" IL)  
30 to 50 Un/Finished (37" IL)

**EU Sizes:**

46 to 66 Short (74cm IL)  
46 to 66 Regular (79cm IL)  
46 to 66 Long (84cm IL)  
46 to 66 Un/Finished (94cm IL)

**Codes & Colours:** H4T0189 Charcoal\*, H4T0159 Navy, H4T0199 Black  
\* Colour only available while stocks last, charcoal to be discontinued



# EUROPA

## **EUROPA IS A SOPHISTICATED, LIGHTWEIGHT COLLECTION OF TAILORED GARMENTS IDEAL FOR THOSE WHO WANT LUXURY AND ARE PREPARED TO PAY JUST A LITTLE MORE TO GET IT.**

The only collection on the market using a 4% Lycra, Bi Stretch fabric for comfort and wonderful crease recovery. Ideal for Leisure resorts, fine hotels, fine restaurants, finance sector, general office and administrative environments.

We used a higher grade of trim (lining, buttons, internal canvas, chest piece and shoulder pads)

than would normally be used in corporate tailoring. We even made sure we put the internal pockets onto fabric inserts rather than directly onto the lining, because it is better and stronger and we believe it is attention to detail that sets the best apart.

We leave nothing to chance in providing the quality, detail and finish expected by you.

### **TECHNICAL SPECIFICATION**



**Fabric: 53% Polyester / 43% Wool / 4% Lycra Bi-Stretch**

(Stretches both ways giving you the full benefit of Lycra unlike many of our competitors who will offer you a weft, one way only, stretch).

**Weight: 280 grams per linear metre**

(Light-weight & machine washable).

**Durable: 40,000+ Martindale test. Grade 4/5 pilling**

(Will look good after days and months of wear in the right environment).

**Aftercare: Machine Washable or Dry Clean**

(Convenient & cost effective).

**Proven fabric: 1000's of wearers with no complaints**

(Peace of mind; you are buying clothing with a great track record from a company with experience).

**Fabric meets Oeko-Tex Standard 100**





MADRID JACKET

### **MADRID JACKET**

A classic style that flatters most shapes. Four seams on the back to ensure a great fit for all sizes.

- Single Breasted Jacket
- 2 Button Fastening
- Tulip Lapel
- 4 Panel Back Detail
- Feature Lining
- Machine Washable

### **GALWAY TROUSER**

A classic parallel leg trouser offering a great fit that flatters and fits most sizes.

- Front Fastening
- Parallel Leg
- Cash Pocket and Feature Lining Waistband
- 1/2 Lined
- Machine Washable





PARIS JACKET



#### **PARIS JACKET**

A contemporary notch lapel jacket offering a modern style with great detail & fit.

- Single Breasted Jacket
- Fitted Style
- 2 Button Fastening
- Notch Lapel
- Styled Back Panel Detail
- Feature Lining
- Machine Washable

#### **VIENNA SKIRT**

Classic straight skirt for a change from trousers. Again all about the fit and the flattering false waistband seam that enhances the wearers shape.

- Pencil Skirt
- Front Seam Detail
- Rear Centre Vent
- Machine Washable



**ROME JACKET**

Ladies commercial classic three button jacket designed to flatter most shapes.

- Single Breasted Jacket
- Classic Fit
- 3 Button Fastening
- 4 Panel Back Detail
- Feature Lining
- Machine Washable







#### **HANOVER TROUSER**

Modern, narrow parallel leg with a plain front. The fit is the key to this very successful trouser. Practical and up to date.

- Front Fastening
- Slim Leg
- Curved Comfort Style Pockets
- 2 Feature Hip Pockets
- Low Waist with Deep Waistband
- 1/2 Lined
- Machine Washable



#### **LONDON TROUSER**

For Ladies who prefer a more flattering and wider leg shape.

- Front Fastening
- Flared Leg
- Belt Loops
- Cash Pocket
- 2 Feature Hip Pockets
- Low Waist with Deep Waistband
- 1/2 Lined
- Machine Washable



#### **GALWAY TROUSER**

A classic parallel leg trouser offering a great fit that flatters & fits most sizes.

- Front Fastening
- Parallel Leg
- Cash Pocket and Feature Lining Waistband
- 1/2 Lined
- Machine Washable





#### **MILAN JACKET**

Two button contemporary jacket.  
A style to suit all wearers. Tailored fit  
with just enough shape to flatter a man.

- Single Breasted Jacket
- 2 Button Fastening
- Side Vents
- Feature Ticket Pocket
- Feature Lining
- Machine Washable

#### **GENEVA TROUSER**

A perfect plain front modern  
trouser for most wearers.

- Plain Front
- French Bearer
- 2 Hip Pocket
- 1/2 Lined
- Machine Washable



“  
**Sophisticated  
tailoring for  
those who  
want the best**  
”





#### **BERLIN JACKET**

Classic three button jacket, cut & style designed to suit all wearers.

- Single Breasted Jacket
- 3 Button Fastening
- Centre Vent
- Feature Lining
- Machine Washable

#### **BONN TROUSER**

A classic fit single pleat trouser designed to suit all wearers.

- Single Pleat
- French Bearer
- 2 Hip Pocket
- 1/2 Lined
- Machine Washable



#### **GENEVA TROUSER**

A perfect plain front modern trouser for most wearers.

- Plain Front
- French Bearer
- 2 Hip Pocket
- 1/2 Lined
- Machine Washable



#### **BONN TROUSER**

A classic fit single pleat trouser designed to suit all wearers.

- Single Pleat
- French Bearer
- 2 Hip Pocket
- 1/2 Lined
- Machine Washable



# EUROPA

## COLLECTION OVERVIEW

The Europa Collection is a sophisticated, lightweight collection of tailored garments ideal for those who want luxury and are prepared to pay just a little more to get it.

Tailored from a fabulous Bi-Stretch fabric for comfort and wonderful crease recovery. Europa is Ideal for Leisure resorts, fine hotels, fine restaurants, finance sector, general office and administrative environments.

### AS A GUIDE

Extra Petite / Petite: Women under 5'2" tall

Short: Men under 5' 6" tall

Regular: Women between 5'3" and 5'9" tall

Regular: Men between 5'7" and 6'1" tall

Long: Women over 5'10" tall

Long: Men over 6'1" tall



### ROME JACKET

- Single Breasted
- Classic Fit
- 3 Button Fastening

- 4 Panel Back Detail
- Feature Lining
- Machine Washable

#### Sizes:

6 to 24 Regular  
6 to 16 Petite  
8 to 24 Long

#### EU Sizes:

34 to 52 Regular  
34 to 44 Petite  
36 to 52 Long

**Codes & Colours:** J4001C Charcoal, J4001N Navy, J4001S Navy Multi Stripe



### PRAGUE SKIRT

- Longline Skirt
- Front and Rear Vent
- Machine Washable

#### Sizes:

6 to 24 Regular (34" length)

#### EU Sizes:

34 to 52 Regular (86cm Length)

**Codes & Colours:** S4005C Charcoal, S4005N Navy, S4005S Navy Multi Stripe



### VIENNA SKIRT

- Pencil Skirt, Rear Centre Vent
- Front Seam Detail
- Machine Washable

#### Sizes:

6 to 24 Regular (23" length)  
6 to 24 Long (25" length)

#### EU Sizes:

34 to 52 Regular (58cm length)  
34 to 52 Long (64cm length)

**Codes & Colours:** S4004C Charcoal, S4004N Navy, S4004S Navy Multi Stripe



### GALWAY TROUSER

- Front Fastening
- Parallel Leg
- Cash Pocket

#### Sizes:

6 to 24 Petite (29" IL)  
6 to 24 Regular (31" IL)  
6 to 24 Long (34" IL)  
6 to 24 Un/Finished (37" IL)

- Feature Lining Waistband
- 1/2 Lined
- Machine Washable

#### EU Sizes:

34 to 52 Petite (74cm IL)  
34 to 52 Regular (79cm IL)  
34 to 52 Long (86cm IL)  
34 to 52 Un/Finished (94cm IL)

**Codes & Colours:** T4007C Charcoal, T4007N Navy, T4007S Navy Multi Stripe

Also available in sizes 11 & 13 (EU 39 & 41) in all lengths



### MADRID JACKET

- Single Breasted
- 2 Button Fastening
- Tulip Lapel

- 4 Panel Back Detail
- Feature Lining
- Machine Washable

#### Sizes:

- 6 to 24 Regular
- 6 to 16 Petite
- 8 to 24 Long

#### EU Sizes:

- 34 to 52 Regular
- 34 to 44 Petite
- 36 to 52 Long

**Codes & Colours:** J4000C Charcoal, J4000N Navy, J4000S Navy Multi Stripe



### PARIS JACKET

- Single Breasted
- Fitted Style
- 2 Button Fastening
- Notch Lapel

- Styled Back Panel Detail
- Feature Lining
- Machine Washable

#### Sizes:

- 6 to 18 Regular
- 6 to 16 Petite
- 8 to 18 Long

#### EU Sizes:

- 34 to 46 Regular
- 34 to 44 Petite
- 36 to 46 Long

**Codes & Colours:** J4002C Charcoal, J4002N Navy, J4002S Navy Multi Stripe



### HANOVER TROUSER

- Front Fastening
- Slim Leg
- Curved Comfort Pockets

- Low Waist with Deep Waistband
- 1/2 Lined
- Machine Washable

#### Sizes:

- 6 to 24 Extra Petite (27" IL)
- 6 to 24 Petite (29" IL)
- 6 to 24 Regular (31" IL)
- 6 to 24 Long (34" IL)
- 6 to 24 Un/Finished (37" IL)

#### EU Sizes:

- 34 to 52 Extra Petite (69cm IL)
- 34 to 52 Petite (74cm IL)
- 34 to 52 Regular (79cm IL)
- 34 to 52 Long (86cm IL)
- 34 to 52 Un/Finished (94cm IL)

**Codes & Colours:** T4008C Charcoal, T4008N Navy, T4008S Navy Multi Stripe

Also available in sizes 11 & 13 (EU 39 & 41) in all lengths



### LONDON TROUSER

- Front Fastening
- Flared Leg
- Belt Loops
- Cash Pocket
- 2 Feature Hip Pockets

- Low Waist with Deep Waistband
- 1/2 Lined
- Machine Washable

#### Sizes:

- 6 to 24 Petite (29" IL)
- 6 to 24 Regular (31" IL)
- 6 to 24 Long (34" IL)
- 6 to 24 Un/Finished (37" IL)

#### EU Sizes:

- 34 to 52 Petite (74cm IL)
- 34 to 52 Regular (79cm IL)
- 34 to 52 Long (86cm IL)
- 34 to 52 Un/Finished (94cm IL)

**Codes & Colours:** T4006C Charcoal, T4006N Navy, T4006S Navy Multi Stripe

Also available in sizes 11 & 13 (EU 39 & 41) in all lengths

# MEN'S



## MILAN JACKET

- Single Breasted
- Tailored Fit
- 2 Button Fastening
- Side Vents

- Feature Ticket pocket
- Feature Lining
- Machine Washable

### Sizes:

36 to 50 Regular  
38 to 48 Short  
38 to 48 Long

### EU Sizes:

46 to 60 Regular  
48 to 58 Short  
48 to 58 Long

**Codes & Colours:** J7000C Charcoal, J7000N Navy, J7000S Navy Multi Stripe



## BERLIN JACKET

- Single Breasted
- 3 Button Fastening
- Centre Vent

- Feature Lining
- Machine Washable

### Sizes:

36 to 54 Regular  
38 to 48 Short  
38 to 48 Long

### EU Sizes:

46 to 64 Regular  
48 to 58 Short  
48 to 58 Long

**Codes & Colours:** J7001C Charcoal, J7001N Navy, J7001S Navy Multi Stripe



## GENEVA TROUSER

- Plain Front
- French Bearer
- 2 Hip Pocket

- 1/2 Lined
- Machine Washable

### Sizes:

28 to 50 Regular (31" IL)  
28 to 50 Short (29" IL)  
28 to 50 Long (33" IL)  
28 to 50 Un/Finished (37" IL)

### EU Sizes:

44 to 66 Regular (79cm IL)  
44 to 66 Short (74cm IL)  
44 to 66 Long (84cm IL)  
44 to 66 Un/Finished (94cm IL)

**Codes & Colours:** T7002C Charcoal, T7002N Navy, T7002S Navy Multi Stripe



## BONN TROUSER

- Single Pleat
- French Bearer
- 2 Hip Pocket

- 1/2 Lined
- Machine Washable

### Sizes:

28 to 50 Regular (31" IL)  
28 to 50 Short (29" IL)  
28 to 50 Long (33" IL)  
28 to 50 Un/Finished (37" IL)

### EU Sizes:

44 to 66 Regular (79cm IL)  
44 to 66 Short (74cm IL)  
44 to 66 Long (84cm IL)  
44 to 66 Un/Finished (94cm IL)

**Codes & Colours:** T7003C Charcoal, T7003N Navy, T7003S Navy Multi Stripe







# SPECIAL EVENTS

## **A COLLECTION OF BLACK TROUSERS, WAISTCOATS AND SKIRT IDEAL FOR THE DEMANDING ENVIRONMENTS OF HOSPITALITY, FACILITIES MANAGEMENT AND SERVICE SECTORS.**

The Special Events collection is tailored from a natural stretch Polyester fabric, that gives outstanding performance and durability during everyday wear.

It is designed to look good day in, day out, wash after wash. This fabric is currently worn by 1,000's of people everyday; it is truly tried and tested.

### **AFFORDABILITY WITHOUT COMPROMISE**

The special Events collection is manufactured to the same exacting standards as more expensive collections. You can't buy this quality of clothing for less: that is a promise. The special Events Collection is the benchmark collection of Easy Care affordable, stylish corporate clothing available in Europe today.

## **TECHNICAL SPECIFICATION**



**Fabric: 100% Superfine (natural stretch) Polyester**  
(Comfortable and durable with great drape).

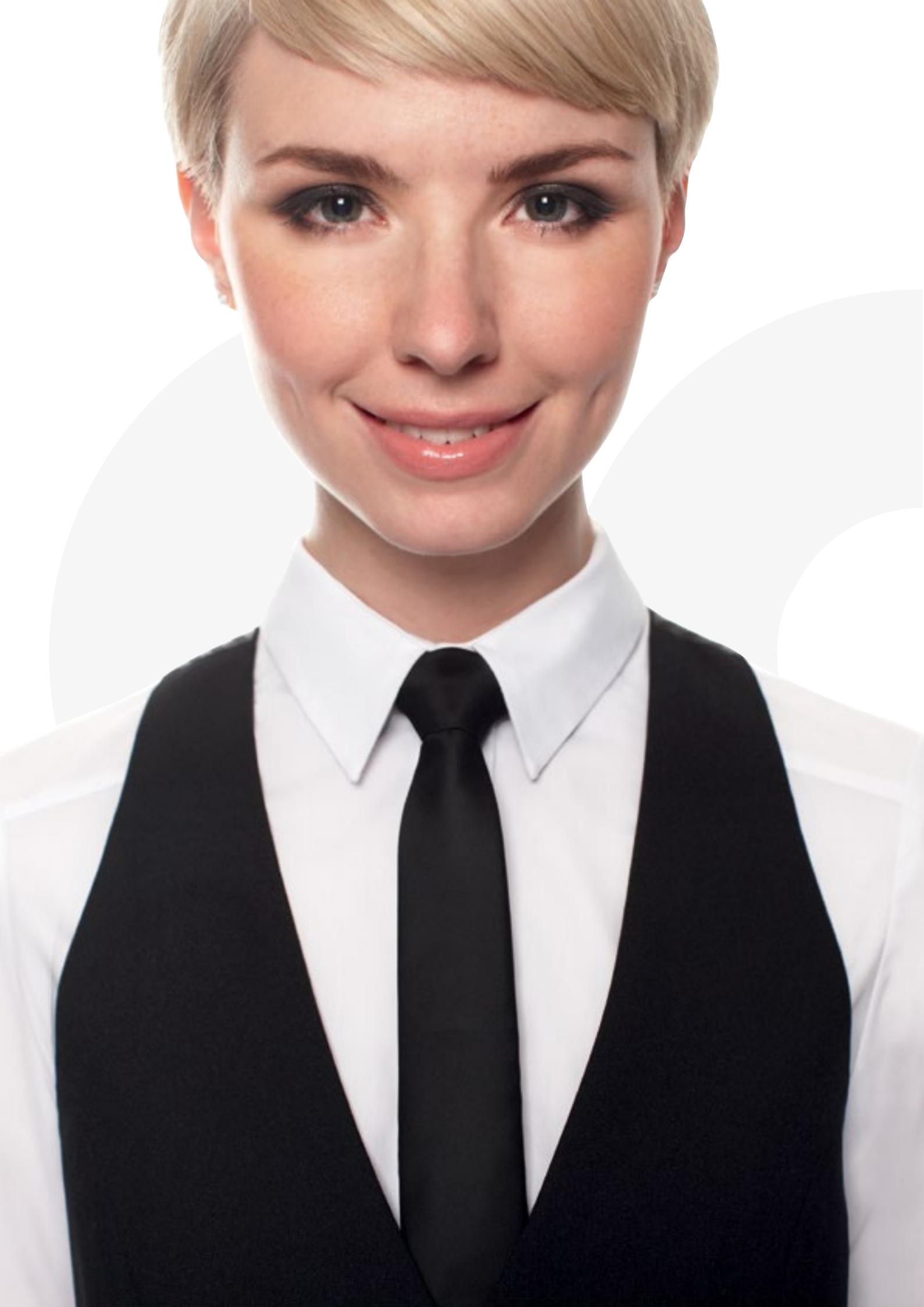
**Weight: 280 grams per linear metre**  
(Perfect for work in a demanding environment like hospitality).

**Durable: 140,000+ martindale test**  
(Will wear and look good day in, day out).

**Aftercare: Machine Washable or Dry Clean**  
(Follow instructions on the garments. Easy care; convenient, cost effective and dry in two hours).

**Proven fabric: 10,000's of wearers**  
(Peace of mind and confidence buying proven fabric and garments).







#### **WIMBLEDON WAISTCOAT**

Lining back waistcoat with strap and buckle to give a perfect flattering fit.

- 4 Button Fastening
- Lining Back with Back Strap and Buckle
- 100% Polyester

#### **ASCOT TROUSER**

Modern, narrow parallel leg with a plain front. The fit is the key to this very successful trouser. Practical and up to date.

- Front Fastening
- Slim Leg
- Curved Comfort Style Pockets
- Key Loop
- 2 Feature Hip Pocket
- Deep Waistband
- Machine Washable
- 100% Polyester

#### **GROSVENOR SKIRT**

A classic pencil skirt, an alternative to a trouser option.

- Pencil Skirt
- Rear Centre Back Vent
- Bungee Cord
- Machine Washable
- 100% Polyester







#### **OVAL WAISTCOAT**

Lining back waistcoat with strap & buckle to give a perfect fit.

- 5 Button Fastening
- Lining Back with Back Strap and Buckle
- 100% Polyester
- Machine Washable

#### **OLYMPIA TROUSER (left)**

A perfect plain front modern trouser for most wearers.

- Plain Front
- French Bearer
- Belt Loops
- 2 Hip Pockets
- Key Loop
- Machine Washable
- 100% Polyester

#### **PRINCIPLE TROUSER - GREY FORMAL STRIPE (above)**

A classic fit single pleat formal trouser designed to suit all wearers.

- Single Pleat
- French Bearer
- Belt Loops
- Hip Pocket
- 1/2 Lined
- Machine Washable
- 70% Polyester 30% Wool



SPECIAL

# EVENTS

## COLLECTION OVERVIEW

The Special Events collection is tailored from a natural stretch Polyester fabric, that gives outstanding performance and durability during everyday wear.

It is designed to look good day in, day out, wash after wash. This fabric is currently worn by 10,000's of people everyday; it is truly tried and tested.

### AS A GUIDE

Extra Petite / Petite: Women under 5'2" tall

Short: Men under 5' 6" tall

Regular: Women between 5'3" and 5'9" tall

Regular: Men between 5'7" and 6'1" tall

Long: Women over 5'10" tall

Long: Men over 6'1" tall



WAISTCOAT  
REAR DETAIL

### WIMBLEDON WAISTCOAT

- 4 Button Fastening
- Lining Back with Back Strap and Buckle
- 100% Polyester
- Machine Washable

#### Sizes:

4/6	8/10	12	14/16	18/20	22/24
XS	S	M	L	XL	XXL

Codes & Colours: V5008B Black



### GROSVENOR SKIRT

- Pencil Skirt
- Rear Centre Back Vent
- Bungee Cord

- Machine Washable
- 100% Polyester

#### Sizes:

4 to 24 Regular	(23" Length)
4 to 24 Long	(25" Length)

#### EU Sizes:

32 to 52 Regular	(58cm Length)
32 to 52 Long	(64cm Length)

Codes & Colours: S5004B Black



### ASCOT TROUSER

- Front Fastening
- Slim Leg
- Key Loop
- 2 Feature Hip Pocket

- Deep Waistband
- Curved Comfort Style Pockets
- Machine Washable
- 100% Polyester

#### Sizes:

4 to 24 Petite	(29" IL)
4 to 24 Regular	(31" IL)
4 to 24 Long	(34" IL)
4 to 24 Un/Finished	(37" IL)

#### EU Sizes:

32 to 52 Petite	(74cm IL)
32 to 52 Regular	(79cm IL)
32 to 52 Long	(84cm IL)
32 to 52 Un/Finished	(94cm IL)

Codes & Colours: T9006B Black



# MEN'S



WAISTCOAT  
REAR DETAIL

### OVAL WAISTCOAT

- 5 Button Fastening
- Lining Back with Back Strap and Buckle
- 100% Polyester
- Machine Washable

#### Sizes:

34/36	38	40	42	44/46	48/50	52/54
XS	S	M	L	XL	XXL	XXXL

Codes & Colours: W5007B Black



### OLYMPIA TROUSER

- Plain Front
- French Bearer
- Belt Loops
- 2 Hip Pockets
- Key Loop
- Machine Washable
- 100% Polyester

#### Sizes:

26 to 50 Short	(29" IL)
26 to 50 Regular	(31" IL)
26 to 50 Long	(33" IL)
26 to 50 Un/Finished	(37" IL)

#### EU Sizes:

42 to 66 Short	(74cm IL)
42 to 66 Regular	(79cm IL)
42 to 66 Long	(84cm IL)
42 to 66 Un/Finished	(94cm IL)

Codes & Colours: T5002B Black



### PRINCIPLE TROUSER - GREY FORMAL STRIPE

- Single Pleat
- French Bearer
- Hip Pocket
- Belt Loops
- 1/2 Lined to Knee
- Machine Washable
- 70% Polyester, 30% Wool

#### Sizes:

28 to 50 Short	(29" IL)
28 to 50 Regular	(31" IL)
28 to 50 Long	(33" IL)
28 to 50 Un/Finished	(37" IL)

#### EU Sizes:

44 to 66 Short	(74cm IL)
44 to 66 Regular	(79cm IL)
44 to 66 Long	(84cm IL)
44 to 66 Un/Finished	(94cm IL)

Codes & Colours: E4T0479 Grey formal stripe



# Individual

**A collection of clothing designed and tailored exclusively for those who want something unique for their team.**

For a truly unique collection of tailored clothing you can choose the fabric, colour, style and trim.

All the elements that go into the Individual collection follow the same meticulous selection and rigorous testing as the Clubclass Corporate Clothing from stock. The only difference is you can individualise your business wear collection to reflect the personality of your own unique business.

The following pages show some of the outstanding designs made for Corporate Wear.

The Individual Collection is available to order with minimum quantities and a manufacturing time, dependent on selection, of 12-24 weeks. Please consult a professional corporate clothing supplier for advice or visit [www.clubclasscc.co.uk](http://www.clubclasscc.co.uk)





## Individual

A COLLECTION  
OF CLOTHING  
DESIGNED  
AND TAILORED  
EXCLUSIVELY  
FOR YOU









# Individual

CHOOSE  
SOMETHING  
UNIQUE FOR  
YOUR TEAM









**CLUBCLASS**  
CORPORATE CLOTHING

A HUGE THANKS TO TWO GREAT CITIES: LONDON AND LEEDS FOR HOSTING CLUBCLASS DURING THE PRODUCTION OF THIS BROCHURE.

We'd especially like to thank Leeds Royal Armouries for letting us use their fantastic building.





**CLUBCLASS**  
CORPORATE CLOTHING

## **HELP WITH YOUR CORPORATE WEAR PROJECT:**

### **Speak to an expert**

The previous pages have shown a wonderful selection of professional corporate tailoring. CCC has been providing solutions for workplace clothing for over 40 years.

If you have questions about any aspect of your clothing project please ask one of the professional suppliers we work with (I am sure their name is on the back of this brochure).

### **Visit [clubclasscc.co.uk](http://clubclasscc.co.uk) for answers to F.A.Q:**

- What are the 5 golden rules to a successful corporate clothing experience?
- How many garments should we allocate each wearer?
- How often should I wash a "washable" tailored garment?
- How do we know our clothing is coming from an ethical source?
- What is the best test of garment suitability?

**CLUBCLASS ONLY WORK WITH PROFESSIONAL CORPORATE CLOTHING SUPPLIERS. ASK THEIR ADVICE AND ENJOY A SUCCESSFUL PROJECT.**



**CLUBCLASS ARE EXPERTS IN THE MANUFACTURE AND SUPPLY OF CORPORATE TAILORING FOR THE WORKPLACE. THEY TAKE PRIDE IN HELPING YOU TO ACHIEVE THE BEST SOLUTION FOR YOUR TEAM.**







**Clubclass: Europe's premier supplier of Corporate Clothing:**

Clubclass is part of the Stuncroft group. Stuncroft manufacture tailored clothing for many of the high-streets favourite clothing brands. We have a 40 year track record in supplying tailored clothing and currently manufacture over 2.5 million tailored garments per year (more than any other supplier in the UK).

**Everyday 1,000's of people get dressed for work in a Clubclass tailored garment.**

Clubclass focus on quality, fabric, style and fit. We are the only supplier of Corporate Tailoring that owns a factory and have full time garment technicians, people with real experience, living and working where we produce the clothing you see in this brochure. Clubclass use dedicated garment technicians for both men's and women's tailoring; this means you get a great fitting suit.

**Clubclass offer peace of mind:**

Clubclass only use ethically audited factories. These factories are inspected by our staff every day. Clubclass have a profound understanding of the corporate tailoring industry and only sell clothing that perform at work (really perform time after time).



reuniform Limited  
George House  
27-31 Westwood Road  
Earlsdon  
Coventry  
CV5 6GF